

## **Soil chemical legacies trigger species-specific and context-dependent root responses in later arriving plants**

Delory, Benjamin M.; Schempp, Hannes; Spachmann, Sina Maria; Störzer, Laura; van Dam, Nicole M.; Temperton, Vicky M.; Weinhold, Alexander

*Published in:*  
Plant, Cell and Environment

*DOI:*  
[10.1111/pce.13999](https://doi.org/10.1111/pce.13999)

*Publication date:*  
2021

*Document Version*  
Publisher's PDF, also known as Version of record

[Link to publication](#)

*Citation for pulished version (APA):*  
Delory, B. M., Schempp, H., Spachmann, S. M., Störzer, L., van Dam, N. M., Temperton, V. M., & Weinhold, A. (2021). Soil chemical legacies trigger species-specific and context-dependent root responses in later arriving plants. *Plant, Cell and Environment*, 44(4), 1215-1230. <https://doi.org/10.1111/pce.13999>

### **General rights**

Copyright and moral rights for the publications made accessible in the public portal are retained by the authors and/or other copyright owners and it is a condition of accessing publications that users recognise and abide by the legal requirements associated with these rights.

- Users may download and print one copy of any publication from the public portal for the purpose of private study or research.
- You may not further distribute the material or use it for any profit-making activity or commercial gain
- You may freely distribute the URL identifying the publication in the public portal ?

### **Take down policy**

If you believe that this document breaches copyright please contact us providing details, and we will remove access to the work immediately and investigate your claim.

## ORIGINAL ARTICLE



WILEY

# Soil chemical legacies trigger species-specific and context-dependent root responses in later arriving plants

Benjamin M. Delory<sup>1</sup> | Hannes Schempp<sup>1</sup> | Sina Maria Spachmann<sup>1</sup> |  
 Laura Störzer<sup>1</sup> | Nicole M. van Dam<sup>2,3</sup> | Vicky M. Temperton<sup>1</sup> |  
 Alexander Weinhold<sup>2,3</sup>

<sup>1</sup>Ecosystem Functioning and Services, Institute of Ecology, Leuphana University of Lüneburg, Lüneburg, Germany

<sup>2</sup>Molecular Interaction Ecology, German Centre for Integrative Biodiversity Research (iDiv) Halle-Jena-Leipzig, Leipzig, Germany

<sup>3</sup>Institute of Biodiversity, Friedrich Schiller University Jena, Jena, Germany

## Correspondence

Benjamin M. Delory, Ecosystem Functioning and Services, Institute of Ecology, Leuphana University Lüneburg, Lüneburg, Germany. Email: benjamin.delory@leuphana.de; delory.benjamin@gmail.com

## Funding information

Deutsche Forschungsgemeinschaft, Grant/Award Number: DFG-FZT 118-202548816; Leuphana University Lüneburg

## Abstract

Soil legacies play an important role for the creation of priority effects. However, we still poorly understand to what extent the metabolome found in the soil solution of a plant community is conditioned by its species composition and whether soil chemical legacies affect subsequent species during assembly. To test these hypotheses, we collected soil solutions from forb or grass communities and evaluated how the metabolome of these soil solutions affected the growth, biomass allocation and functional traits of a forb (*Dianthus deltooides*) and a grass species (*Festuca rubra*). Results showed that the metabolomes found in the soil solutions of forb and grass communities differed in composition and chemical diversity. While soil chemical legacies did not have any effect on *F. rubra*, root foraging by *D. deltooides* decreased when plants received the soil solution from a grass or a forb community. Structural equation modelling showed that reduced soil exploration by *D. deltooides* arose via either a root growth-dependent pathway (forb metabolome) or a root trait-dependent pathway (grass metabolome). Reduced root foraging was not connected to a decrease in total N uptake. Our findings reveal that soil chemical legacies can create belowground priority effects by affecting root foraging in later arriving plants.

## KEYWORDS

niche modification, plant–soil interactions, priority effect mechanism, root exudates, root traits, untargeted metabolomics

## 1 | INTRODUCTION

Assembly history is an important determinant of the structure and functioning of ecological communities (Chase, 2003; Fukami et al., 2010; Halliday et al., 2020), and plant communities are no exception (Werner, Vaughn, Stuble, Wolf, & Young, 2016). The sequence and timing of multiple biotic and abiotic events that happened in the past cause plant communities to be historically contingent (Temperton, Baasch, von Gillhaussen, & Kirmer, 2016; Werner,

Stuble, Groves, & Young, 2020). This historical contingency is often caused by priority effects, in which the order and timing of species immigration influence further assembly by determining the way species affect one another in communities (Fukami, 2015). Typically, priority effects occur when early arrival of species at a site affects the growth, development and/or reproduction of species arriving later (Hess et al., 2020). Priority effects are known to influence the structure, but also the functioning of plant communities. For instance, plant order of arrival has been shown to modulate aboveground and

This is an open access article under the terms of the Creative Commons Attribution License, which permits use, distribution and reproduction in any medium, provided the original work is properly cited.

© 2021 The Authors. *Plant, Cell & Environment* published by John Wiley & Sons Ltd.

belowground productivity (Körner, Stöcklin, Reuther-Thiébaud, & Pelaez-Riedl, 2008; Weidlich et al., 2017, 2018), biodiversity patterns (Martin & Wilsey, 2012; Wilsey, Barber, & Martin, 2015), exotic and native species dominance (Delory, Weidlich, Kunz, Neitzel, & Temperton, 2019b; Grman & Suding, 2010; Stuble & Souza, 2016), as well as the mechanisms of grassland overyielding in mixed communities (Delory, Weidlich, von Gillhaussen, & Temperton, 2019a). Although more research is necessary to determine how long priority effects can persist, there is now strong evidence that priority effects can lead to alternative vegetation states that differ in both structure and function (Weidlich et al., 2021; Wilsey, 2020).

Priority effects most likely arise from a diversity of mechanisms operating simultaneously. In a niche-based framework, mechanisms creating priority effects can be categorized into niche preemption and niche modification (Fukami, 2015). Niche preemption occurs when early arriving species decrease the availability of essential resources such as space, light and soil nutrients for species arriving later. If niche preemption is the main force creating priority effects, the growth and development of late-arriving species can only be negatively impacted by early species (Fukami, 2015). Niche modification, however, occurs when early-arriving species affect the identity of the species able to further colonise the community by modifying the types of niches available for late-arriving species. Depending on the biological mechanism(s) responsible for niche modification, late-arriving species can either be inhibited or facilitated by early arriving species (Delory, Weidlich, von Gillhaussen, & Temperton, 2019a; Fukami, 2015). Although niche preemption plays an important role in the creation of priority effects in plant communities (Kardol, Souza, & Classen, 2013), the relative importance of niche modification mechanisms in creating priority effects certainly deserves more attention (Halliday et al., 2020; Solarik, Cazelles, Messier, Bergeron, & Gravel, 2020).

So far, niche modification-driven priority effects in plant communities have been studied mainly in the context of plant–soil feedback (PSF) experiments (Bever et al., 2010; van der Putten et al., 2013). When plant species arrive early at a site, they will alter the biotic and abiotic components of the soil environment and create soil legacies that might affect early species performance (often negatively) as well as the growth and development of species arriving later during succession (Bever, 2003; Grman & Suding, 2010; Klironomos, 2002). Previous studies showed that early arriving species can induce soil legacy effects through changes in the composition of soil microbial communities (e.g., accumulation of pathogenic fungi), which can then contribute to historical contingency effects by altering competitive relationships in plant communities (Heinen et al., 2020; Kardol, Cornips, van Kempen, Bakx-Schotman, & van der Putten, 2007). However, due to the strong interlinkage between microbial communities living in the rhizosphere and metabolites exuded by plant roots, biotic PSF effects are tightly associated with root exudation (Korenblum et al., 2020; Mommer, Kirkegaard, & van Ruijven, 2016; Sasse, Martinoia, & Northen, 2018).

Root exudates mediate complex belowground interactions between plants and soil organisms (Delory, Delaplace, Fauconnier, & du Jardin, 2016; Sasse et al., 2018; van Dam & Bouwmeester, 2016). They also impact on the functioning of ecosystems, notably through their effect on soil microbial activity (Lange et al., 2015), soil carbon dynamics

(de Vries et al., 2019; Henneron, Cros, Picon-Cochard, Rahimian, & Fontaine, 2020), plants' response to environmental stress (Williams & de Vries, 2019), nutrient cycling and soil aggregate stability (Bardgett, Mommer, & de Vries, 2014; Mommer et al., 2016; Oburger & Jones, 2018). A number of studies have demonstrated the importance of root exudates in creating soil legacies. A first line of evidence comes from studies showing that root-exuded metabolites are able to shape rhizospheric bacterial and fungal communities (Eisenhauer et al., 2017; Sasse et al., 2018). This change in rhizosphere microbiota can then trigger PSF responses on plant growth and defence (Hu et al., 2018). A second line of evidence comes from studies showing that root-secreted allelochemicals can suppress the growth of neighbours (Bertin, Yang, & Weston, 2003; Callaway & Aschehoug, 2000; Perry, Alford, Horiuchi, Paschke, & Vivanco, 2007), and that root exudates can act as chemical cues for neighbour detection and recognition (Kong et al., 2018; Wang, Kong, Wang, & Meiners, 2020). Root exudates can not only provide information about the identity of a neighbour growing in the vicinity of a focal plant, but they can also carry information about the population origin of a neighbour and its degree of genetic relatedness to the focal plant (Biedrzycki, Jilany, Dudley, & Bais, 2010; Semchenko, Saar, & Lepik, 2014). Despite this body of evidence supporting the central role of root exudates in structuring the rhizosphere microbiome and mediating plant–plant interactions, we still do not know to what extent soil chemical legacies can affect the growth and development of later arriving plant individuals and contribute to the creation of priority effects in plant communities.

In the context of this paper, soil chemical legacies should be understood as legacies associated with the set of organic chemicals (or metabolome) present in the soil solution of an established plant community that late species will have to face when they attempt to colonise that community. This includes all the soluble organic compounds of low and high molecular weight released into the soil solution by living plant roots (root exudates) and microorganisms, senescing and dead root or microbial cells, as well as decomposing soil organic matter. Therefore, it encompasses all the metabolites originating from dead and living plant roots and their associated symbionts (rhizodeposition), but also all the metabolites released into the soil solution by microorganisms (Oburger & Jones, 2018; Oburger & Schmidt, 2016).

In this study, we investigated to what extent the composition of the metabolome found in the soil solution of a plant community depends on its species composition, and how strongly soil chemical legacies can affect later arriving plants. Considering that the composition of the metabolome found in the soil solution is dynamic, species-specific and strongly dependent on ambient environmental conditions (Oburger & Jones, 2018; Sasse et al., 2018; Williams & de Vries, 2019), we first hypothesise that the composition and chemical diversity of the soil solution's metabolome depends on the species composition of the early arriving species group (e.g., after a disturbance). Second, we hypothesize that soil chemical legacies can create priority effects by affecting the growth, biomass allocation, and/or functional traits of later arriving plants. We predict that late-arriving species will be more affected by soil chemical legacies created by a plant community composed of functionally similar species to itself.

This prediction is consistent with the limiting similarity hypothesis rooted in community invasibility research (Fargione, Brown, & Tilman, 2004; MacArthur & Levins, 1967).

## 2 | MATERIALS AND METHODS

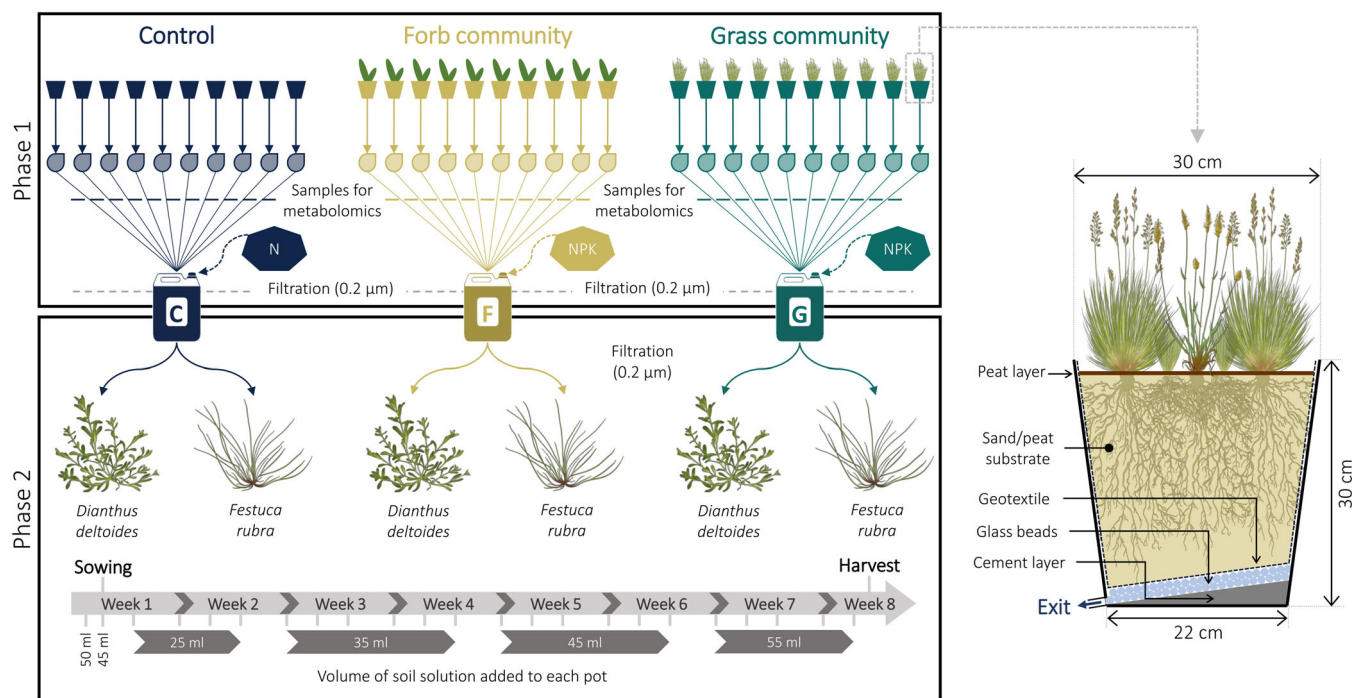
In order to test if soil chemical legacies can affect later arriving plants and play a role in the creation of priority effects, we set up an experiment consisting of two different phases: (a) collecting soil solution from plant communities differing in species composition (forbs or grasses) and (b) evaluating the effect of the metabolomes found in the collected soil solutions on the growth, biomass allocation and functional traits of late arriving plant individuals (Figure 1).

### 2.1 | Phase 1: Collection of the soil solution from different plant communities

Thirty mesocosms were engineered to facilitate the frequent sampling of soil solution (Figure 1). A cement layer with a slope directing the percolating soil solution towards an outlet valve was added at the bottom of each pot. This cement layer was painted (Aryl liquid plastic 2668, Renovo) and a polyester resin (Resinpal 1719, Resinpal) was applied at the junction between the cement layer and pot walls. All mesocosms were filled with 1 kg of 1 cm-diameter glass beads and 15 kg of a 5 mm-sieved mixture of sand (90%, v/v) and peat (10%, v/v). Before

adding the substrate, a water-permeable geotextile was added inside the pots. Ten days later, 10 mesocosms were sown with a mixture of four grass species (Grasses: *Festuca rubra*, *Festuca ovina*, *Anthoxanthum odoratum*, *Corynephorus canescens*), 10 were sown with a mixture of four forb species (Forbs: *Pilosella officinarum*, *Arenaria serpyllifolia*, *Silene vulgaris*, *Dianthus deltoides*) and 10 were left unsown (CTL). Seed mixtures were calculated to reach a planting density of 80 individuals per species and per pot. Because of a strong dominance of *S. vulgaris* in forb communities, 40 individuals of that species were removed from each mesocosm in the first 2 months. All pots were regularly watered with an equal volume of tap water throughout the duration of the experiment.

Soil solution sampling started 65 days after sowing and was repeated two times a week for 5 weeks. Soil solution samples were collected using a protocol similar to the one described in Semchenko et al. (2014). At each sampling date, each mesocosm was watered with tap water and 200 mL of soil solution leaching out of the pots was collected. In order to get the required amount of soil solution, the volume of tap water added at the top of the soil had to be adjusted for each treatment (Grasses > Forbs > CTL). Directly after collection, soil solution samples were stored in a cool box. For each treatment, all samples collected from different mesocosms and at different time points were pooled in large canisters and stored in the dark at  $-20^{\circ}\text{C}$ . For each treatment, 20 L of soil solution was collected over the entire duration of the experiment ( $0.2 \text{ L} \times 10 \text{ mesocosms} \times 10 \text{ sampling points}$ ). Once a week, soil solution and tap water (Tap) samples were also collected for chemical analyses. Particulates and microorganisms were removed from the three soil solutions by filtration (pore size:



**FIGURE 1** Schematic overview of the experiment designed to test if soil chemical legacies can affect later arriving plants and contribute to the creation of priority effects. The experiment consisted of two successive phases: collecting soil solution from plant communities differing in species composition, plus controls with soil only (Phase 1), and evaluating the effect of the metabolome contained in the collected soil solutions on the growth, biomass allocation, and functional traits of *D. deltoides* and *F. rubra* (Phase 2). A schematic description of the mesocosms used for the first phase of the experiment is provided on the right side of the figure

0.2  $\mu\text{m}$ ; MSR TrailShot, MSR) and the nutrient content of each solution was analysed (Raiffeisen-Laborservice, Ormont, Germany). As expected,  $\text{NO}_3^-$ ,  $\text{PO}_4^{3-}$  and  $\text{K}^+$  concentrations were lower in soil solutions from grass and forb communities (Figure S1). Analyses did not show any difference in micronutrient concentrations between soil solutions. To minimise differences in macronutrient concentrations,  $\text{Ca}(\text{NO}_3)_2 \cdot 4\text{H}_2\text{O}$  was added to the solution collected from unsown mesocosms (6.2  $\text{mg L}^{-1}$ ), whereas  $\text{KNO}_3$  and  $\text{KH}_2\text{PO}_4$  were added to the solutions collected from forb (22.5  $\text{mg L}^{-1}$   $\text{KNO}_3$  and 0.7  $\text{mg L}^{-1}$   $\text{KH}_2\text{PO}_4$ ) and grass communities (21.7  $\text{mg L}^{-1}$   $\text{KNO}_3$  and 0.8  $\text{mg L}^{-1}$   $\text{KH}_2\text{PO}_4$ ). After addition of these salts, all solutions had very similar macronutrient concentrations (Figure S1).

This first phase of the experiment was performed in a greenhouse located in Lüneburg (Lower Saxony, Germany). The temperature inside the greenhouse was  $25.2 \pm 6.2^\circ\text{C}$  during the day and  $19.3 \pm 3.2^\circ\text{C}$  during the night.

## 2.2 | Metabolomic fingerprinting of soil solution samples

During Phase 1, soil solution samples for chemical analyses were collected from 30 mesocosms at five different time points and stored at  $-20^\circ\text{C}$  until further processing. For each mesocosm, a composite soil solution was created by pooling aliquots (8 mL) collected at each time point. Composite soil solutions were then filtered using syringe filters equipped with a cellulose acetate membrane (pore size: 0.2  $\mu\text{m}$ ) to remove particulates and microorganisms. The concentration of dissolved organic carbon (DOC) in composite soil solutions was measured using a TOC analyser (iso TOC Cube; Elementar, Langenselbold, Germany). The samples were enriched according to a method modified from Strehmel, Böttcher, Schmidt, and Scheel (2014). Soil solutions were evaporated in falcon tubes until dryness using a freeze dryer. The residue was then suspended in 2 mL water/methanol (95/5, v/v). The samples were sonicated at ambient temperature for 10 min and the supernatant was transferred to a 2 mL Safe-Lock tube. After 10 min of centrifugation at 6,000g, 1.5 mL of the sample solution was loaded on a SPE cartridge (Chromabond® C18 Hydra; bed weight, 200 mg; capacity, 3 mL; Marcherey-Nagel) that was previously conditioned with 1 mL pure methanol and 1 mL water/formic acid (98/2, v/v). The cartridge was washed with 1 mL pure water and samples were eluted with 1 mL methanol/formic acid (98/2, v/v) into 2 mL Safe-Lock tubes. The samples were reduced to dryness in a vacuum centrifuge at  $40^\circ\text{C}$  and reconstituted in 150  $\mu\text{L}$  methanol/water (70/30, v/v). After sonication for 10 min at ambient temperature and centrifugation for 10 min at 6,000g, the supernatant was transferred to a glass vial and subjected to Liquid Chromatography-Time of Flight-Mass Spectrometry (LC-qToF-MS) analysis.

Enriched soil solution samples were run twice on LC-qToF-MS and were analysed with an Ultimate 3000 UHPLC system (Thermo Scientific Dionex) equipped with an Acclaim RSLC 120 column (150  $\times$  2.1 mm; particle size, 2.2  $\mu\text{m}$ ; Thermo Fischer Scientific) using the following gradient at a flow rate of 0.5  $\text{mL min}^{-1}$ : 0–2 min isocratic

95% A (water/formic acid, 99.95/0.05, v/v) and 5% B (acetonitrile/formic acid, 99.95/0.05, v/v); 2–12 min, linear from 5% to 45% B; 12–19 min, linear from 45% to 95% B; 19–22 min, isocratic 95% B; 22–25 min, linear from 95% to 5% B; 25–30 min, isocratic 5% B. After separation on the column, compounds were detected using a maXis impact qToF-Mass Spectrometer (Bruker Daltonics, Bremen, Germany). We measured in negative (neg) and positive (pos) mode under the following conditions: scan range, 50–1,400  $m/z$ ; acquisition rate, 3 Hz; end plate offset,  $-500\text{ V}$ ; capillary voltage, 3,500 V (positive) or 2,500 V (negative); nebulizer pressure, 3 bar (positive) or 2.5 bar (negative); dry gas, 11  $\text{L min}^{-1}$ ; dry temperature,  $240^\circ\text{C}$  (positive) or  $220^\circ\text{C}$  (negative). Mass calibration was performed using sodium formate clusters (10 mM solution of NaOH in 50/50 [v/v] isopropanol/water containing 0.2% formic acid). Every 10 samples, a mixture of all the samples (Mix) was injected as a quality control sample.

## 2.3 | Processing of raw LC-MS data

The LC-qToF-MS raw data were converted to the generic mzXML format using the CompassXport utility of the Bruker Daltonics Data Analysis software. Peak picking, feature alignment and feature grouping was done in R 3.6.0 (R Core Team, 2019) using the Bioconductor (Huber et al., 2015) packages 'xcms' v1.52.0 (Benton, Want, & Ebbels, 2010; Smith, Want, O'maille, Abagyan, & Siuzdak, 2006; Tautenhahn, Böttcher, & Neumann, 2008) and 'CAMERA' v1.32.0 (Kuhl, Tautenhahn, Böttcher, Larson, & Neumann, 2012). For raw data pre-processing with 'xcms' and 'CAMERA', all samples were organized according to their origin into five groups: Forbs, Grasses, CTL, Tap water, or Mix. The following 'xcms' parameters were applied: peak picking method 'centWave' (snthr = 50; ppm = 5; peakwidth = 4, 10); peak grouping method 'density' (minfrac = 0.5; bw = 3; mzwid = 0.05); retention time correction method 'peakgroups' (family = symmetric). The detected features (i.e.,  $m/z$  value at a certain retention time) were processed with CAMERA to annotate adducts, fragments and isotope peaks. The following parameters were applied: extended rule set (<https://github.com/stanstrup/commonMZ/tree/master/inst/extdata>); perfwid = 0.6; calclso = TRUE; calcCaS = TRUE. CAMERA additionally sorted these features into pseudo compound (PC) groups. Pseudo compound groups consist of features with similar retention times that potentially are of the same metabolite. Lastly, we chose one representative feature for each PC group. This choice was made using a maximum heuristic approach to identify the feature that had the highest intensity for a specific PC group over all samples (Ristok et al., 2019). In our analysis, each PC group was therefore represented by one feature with a known mass-to-charge ratio ( $mz$ ) and retention time ( $rt$ ).

Following this first processing step, features with a constant or single value across samples were removed from the dataset. Using the missForest R package (Stekhoven & Bühlmann, 2012), missing values were imputed using a random forest algorithm (500 trees). This imputation method has been shown to outperform other methods commonly used for LC-MS metabolomics data (Kokla, Virtanen, Kolehmainen, Paananen, & Hanhineva, 2019). Peak intensity values



were then normalized based on DOC values and transformed using a generalized logarithmic transformation.

## 2.4 | Analysis of differences in metabolome composition and chemical diversity

The analysis of a biological or environmental sample using an untargeted metabolomics approach often results in the detection of a very high number of unknown chemical compounds for which reference data (i.e., fully identified compounds) are not available (Da Silva, Dorrestein, & Quinn, 2015; Uthe et al., 2020). Therefore, rather than focusing on metabolite identification, the analyses reported in this paper focus on the detection of differences in composition and chemical richness between soil solution samples (metabolomic fingerprinting). Considering that one of the main aims of our experiment was to determine if the composition of the metabolome found in the soil solution of plant communities was dependent on its species composition, we argue that the methodological approach described below is well suited to answer our research question.

Differences in metabolome composition between soil solution samples were visualised using principal component analysis (PCA; Lê, Josse, & Husson, 2008). Positive and negative ionisation data were merged for multivariate statistical analysis. Detection of the most discriminant metabolites was performed using a random forest approach (Liaw & Wiener, 2002). First, a random forest model was fitted to metabolomics data using 1,000 trees and a combination of model hyperparameters that minimised the out-of-bag (OOB) error ( $mtry = 150$ ,  $nodesize = 1$ ,  $samplesize = 23$ ; OOB error rate: 3.45%). Second, the most discriminant features were detected using the Boruta R package (Kursa & Rudnicki, 2010).

Differences in chemical diversity between metabolomes were analysed using two complementary approaches. First, metabolomes were compared based on their chemical richness (i.e., the number of metabolites detected in a given soil solution). Differences between groups (CTL, Forbs and Grasses) were tested using a negative binomial generalized linear model. Model fit was evaluated using a likelihood ratio test (LRT). Pairwise comparisons were performed on estimated marginal means using Tukey contrasts (Lenth, 2018). Second, we quantified the strength of the linear relationship between the abundance of organic chemicals (DOC concentration) and metabolite richness by calculating the Pearson's product-moment correlation coefficient. Differences in DOC concentration between CTL, Forbs and Grasses samples were tested using a one-way ANOVA followed by pairwise comparisons of estimated marginal means using Tukey contrasts (Lenth, 2018).

## 2.5 | Phase 2: Testing the impact of soil chemical legacies on the growth, biomass allocation and functional traits of late arriving plant individuals

We set up an experiment using a full factorial and randomized design to test the impact of the metabolome found in the three soil solutions

collected in Phase 1 (CTL, Forbs, Grasses) on the biomass production and allocation as well as on leaf and root functional traits of two grassland species: *Dianthus deltoides* and *Festuca rubra* (Figure 1). These two species were selected because they are common dry acidic grassland species with contrasted functional trait values. Compared to *F. rubra*, *D. deltoides* has a greater specific leaf area and N content, but a lower leaf dry matter content, C:N ratio, and root tissue density (Figure S2). Each treatment combination (two species  $\times$  three soil solutions) was replicated 10 times.

Sixty-two pots (volume: 2 L) were filled with 2 kg of sand. Before adding the substrate, a layer of 1 cm-diameter glass beads was added at the bottom of the pots. In addition, a perforated plastic bag was placed inside each pot to facilitate root extraction at harvest. Pots were then randomly positioned in plastic trays inside a growth chamber (light phase:  $21.6 \pm 1.1^\circ\text{C}$ ; dark phase:  $17.2 \pm 1.0^\circ\text{C}$ ; 16 hr light/8 hr dark; lamps: SANlight P4-serie, 400–760 nm; PAR:  $302 \pm 21 \mu\text{mol m}^{-2} \text{s}^{-1}$ ). Plastic trays were randomized regularly inside the growth chamber. All pots located inside the same tray were treated with the same soil solution. The day before sowing, each pot received 100 mL of tap water and 50 mL of the corresponding soil solution. On the next day, half of the pots were sown with four seeds of *D. deltoides* and the other half with four seeds of *F. rubra*. After sowing, a thin layer of 5 mm-sieved peat was added at the top of the soil and all pots received 45 mL of soil solution. One week after sowing, excess seedlings were removed in order to keep one plant per pot. For each species, one randomly selected pot was permanently equipped with a soil moisture sensor (ECH<sub>2</sub>O EC-5; Meter Environment, München, Germany). During the experiment, a volume of soil solution was added to each pot three times a week. The volume of soil solution added to the pots was increased by 10 mL every 2 weeks (from 25 mL/pot to 55 mL/pot, see Figure 1). Over the entire duration of the experiment, each pot received 950 mL of the corresponding soil solution. Plants were harvested 50 days after sowing.

## 2.6 | Plant measurements

At harvest, leaf chlorophyll concentration was measured using a chlorophyll content meter (CCM-300; Opti-Sciences, Hudson, NY). For *D. deltoides*, we registered the average of six values measured on six different leaves. For *F. rubra*, we registered the average of nine values measured on three different leaves from three randomly selected tillers. On each plant, 10 young, healthy and fully expanded leaves were sampled for leaf trait measurements. The leaves were scanned on a flatbed scanner (Epson Perfection Photo V800, 24-bit colour images) at a resolution of 800 dpi. The total leaf area in each image was calculated using an ImageJ macro relying on k-means clustering for image segmentation. After scanning, the fresh weight of the 10 selected leaves was recorded. The total shoot fresh weight of each plant was measured after cutting the plants at ground level. Leaf and shoot samples were then dried at  $60^\circ\text{C}$  for 48 hr for dry weight determination. These data were used to calculate the following traits: dry weight of a leaf, area of a leaf, specific

leaf area (SLA, leaf area divided by leaf dry weight), and leaf dry matter content (LDMC, leaf dry weight divided by leaf fresh weight).

At the end of the experiment, each root system was extracted from the soil under running water and stored at  $-20^{\circ}\text{C}$ . Root systems were washed carefully following Delory, Weidlich, van Duijnen, Pagès, and Temperton (2018). For each plant, a representative subsample of fine roots was then spread in a transparent plastic tray filled with a thin layer of distilled water and scanned at a resolution of 1,200 dpi using a flatbed scanner (Epson Perfection V800 Photo, 8-bit grayscale images). When spreading the roots inside the tray, care was taken to minimize overlapping. The root length density inside the tray averaged  $0.73 \pm 0.09 \text{ cm cm}^{-2}$ , which is in agreement with recommendations for root length measurements using image analysis (Delory et al., 2017). In total, five to six images were acquired for each root system, which represents  $1,581 \pm 182 \text{ cm}$  of fine roots per plant. Scanned and non-scanned roots were stored separately and dried in an oven ( $60^{\circ}\text{C}$  for 48 hr) for dry weight determination. Root images were batch-processed with RhizoVision Explorer (Seethepalli & York, 2020) with the following settings: image thresholding level set to 215; filter particles larger than 500 pixels; root pruning threshold set to 10; 11 diameter classes: from 0 to 1 mm by 0.1 mm and one extra class for roots with a diameter greater than 1 mm. Using root parameters calculated for each diameter class (Rose, 2017; Rose & Lobet, 2019), the following root traits were determined for each plant: specific root length (SRL, total root length divided by root dry weight), specific root area (SRA, total root area divided by root dry weight), root tissue density (RTD, root dry weight divided by total root volume), and length-weighted average diameter (D). The root surface density (RSD) inside the pots was used as a proxy for soil exploration and was estimated as  $(\text{RDW} \times \text{SRA})/V_s$ , where RDW and  $V_s$  are the dry weight of the root system and the volume of soil inside a pot, respectively.

Biomass allocation was assessed by calculating the root and shoot mass fractions (i.e., the ratio between root or shoot biomass and total plant biomass). In addition, the carbon (C) and nitrogen (N) content of leaf and root samples was measured using a C/N analyser (Vario EL Cube; Elementar, Langenselbold, Germany). For each plant, the N mass found in shoots and roots was used as a proxy for total N uptake. Shoot N content was measured with a C/N analyser for *D. deltooides*, but was estimated based on leaf N concentration values for *F. rubra*.

## 2.7 | Data analysis

When analysing and interpreting the data presented in this paper, we considered recent calls to stop using *p*-values in a dichotomous way and stop declarations of 'statistical significance' in scientific papers (Amrhein, Greenland, & McShane, 2019; Rillig et al., 2019; Wasserstein, Schirm, & Lazar, 2019). To do so, we reported effect sizes (as measured by the absolute difference between treatment means) and their 95% confidence intervals computed by bootstrap resampling (10,000 iterations). Following Amrhein et al. (2019), 95% confidence intervals will be referred to as compatibility intervals. For each response variable, effect sizes were assessed by comparing the mean values and their compatibility intervals.

To understand how soil chemical legacies of each plant community (either forbs or grasses) affected root foraging (RSD) and total N uptake by *D. deltooides* and *F. rubra*, we constructed piecewise structural equation models (SEM) that we fitted to our data using the piecewiseSEM R package (Lefcheck, 2016). The main goal of this analysis was to investigate the cascade of causal relationships leading to altered root foraging in later arriving plants exposed to soil chemical legacies. Each piecewise SEM consisted of a set of five linear equations (Equations 1–5). In Equations (1)–(5),  $\alpha$  and  $\beta$  are regression parameters (intercepts and slopes). Model residuals are denoted by  $\varepsilon$ . In our SEMs, soil chemical legacies (SCL) can affect root foraging via two mechanistic pathways: a *root growth-dependent pathway* and a *root trait-dependent pathway*. In the root growth-dependent pathway, soil chemical legacies (CTL versus Forbs or CTL versus Grasses, coded as 0 for CTL and 1 for Forbs or Grasses) directly affect root foraging by affecting root biomass production (RDW; Equation 1). In the root trait-dependent pathway, soil chemical legacies directly affect root diameter (D) and/or specific root length (SRL) (Equations 2 and 3). Changes in D and SRL can then alter root foraging by affecting the specific root area (SRA; Equation 4). These two pathways are not mutually exclusive as an overall change in root foraging can occur via simultaneous changes in morphological root traits and root biomass production. How changes in RDW and SRA affected total N uptake (N) was also evaluated in the model (Equation 5). Mechanisms not captured by the root growth-dependent and root trait-dependent pathways were represented by a direct path between soil chemical legacy and N uptake (Equation 5). The goodness-of-fit of each model was assessed using Fisher's C test statistic (Lefcheck, 2016).

$$\text{RDW}_i = \alpha_1 + \beta_1 \text{SCL}_i + \varepsilon_1 \quad (1)$$

$$\text{SRL}_i = \alpha_2 + \beta_2 D_i + \beta_3 \text{SCL}_i + \varepsilon_2 \quad (2)$$

$$D_i = \alpha_3 + \beta_4 \text{SCL}_i + \varepsilon_3 \quad (3)$$

$$\text{SRA}_i = \alpha_4 + \beta_5 \text{SRL}_i + \beta_6 D_i + \varepsilon_4 \quad (4)$$

$$N_i = \alpha_5 + \beta_7 \text{RDW}_i + \beta_8 \text{SRA}_i + \beta_9 \text{SCL}_i + \varepsilon_5 \quad (5)$$

Data analysis was performed in R 3.6.3 (R Core Team, 2020). Plots were created using ggplot2 (Wickham, 2016) and ggpubr (Kassambara, 2020).

## 3 | RESULTS

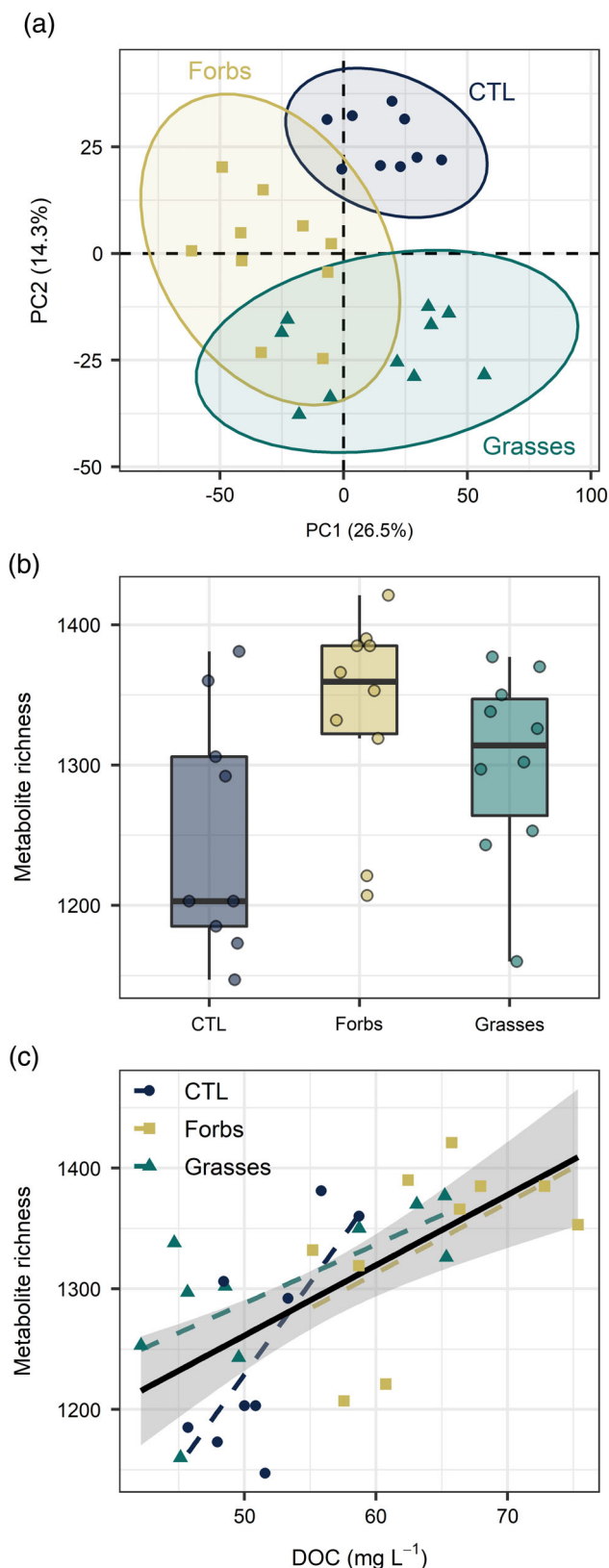
### 3.1 | Plant community composition affects the chemical composition and diversity of the metabolome found in the soil solution

We used a PCA to compare the chemical profiles of the different soil solution samples. This PCA showed a good separation between the metabolomes of soil solutions collected from Forbs, Grasses and CTL

mesocosms (Figure 2a; Figure S3). For each soil solution category, the abundance of the 20 most discriminant metabolites is provided in Figure S5. A total of 38 (32 pos/6 neg), 38 (35 pos/3 neg), and

81 (59 pos/22 neg) metabolites were only detected in CTL, Forbs, and Grasses samples, respectively. The number of metabolites found in the soil solution depended on the composition of plant communities (Figure 2b;  $LRT = 7.2$ ,  $p = .03$ ). When plants were present, the soil solution contained more metabolites than when plants were absent, but this difference was stronger for forb communities than for grass communities. On average, the soil solution of forb and grass communities contained 88 and 52 metabolites more than CTL samples, respectively. Compared to tap water, the soil solution of CTL mesocosms contained an average of 655 more metabolites.

Dissolved organic carbon (DOC) concentration was highest in the soil solution of forb communities (Figure 2c;  $F_{2,26} = 9.8$ ,  $p = .0007$ ). In comparison with CTL samples, Forbs and Grasses samples had 25% and 3% more DOC, respectively. We found a strong positive relationship between the total abundance of organic chemicals in the soil solution and metabolite richness (Figure 2c;  $r = .65$ ,  $p = .0001$ ), thus showing that samples with high DOC concentration also had a high number of metabolites. This is consistent with the abundance-dependence of chemical diversity that has been observed across multiple levels of biological organisation (Wetzel & Whitehead, 2020).



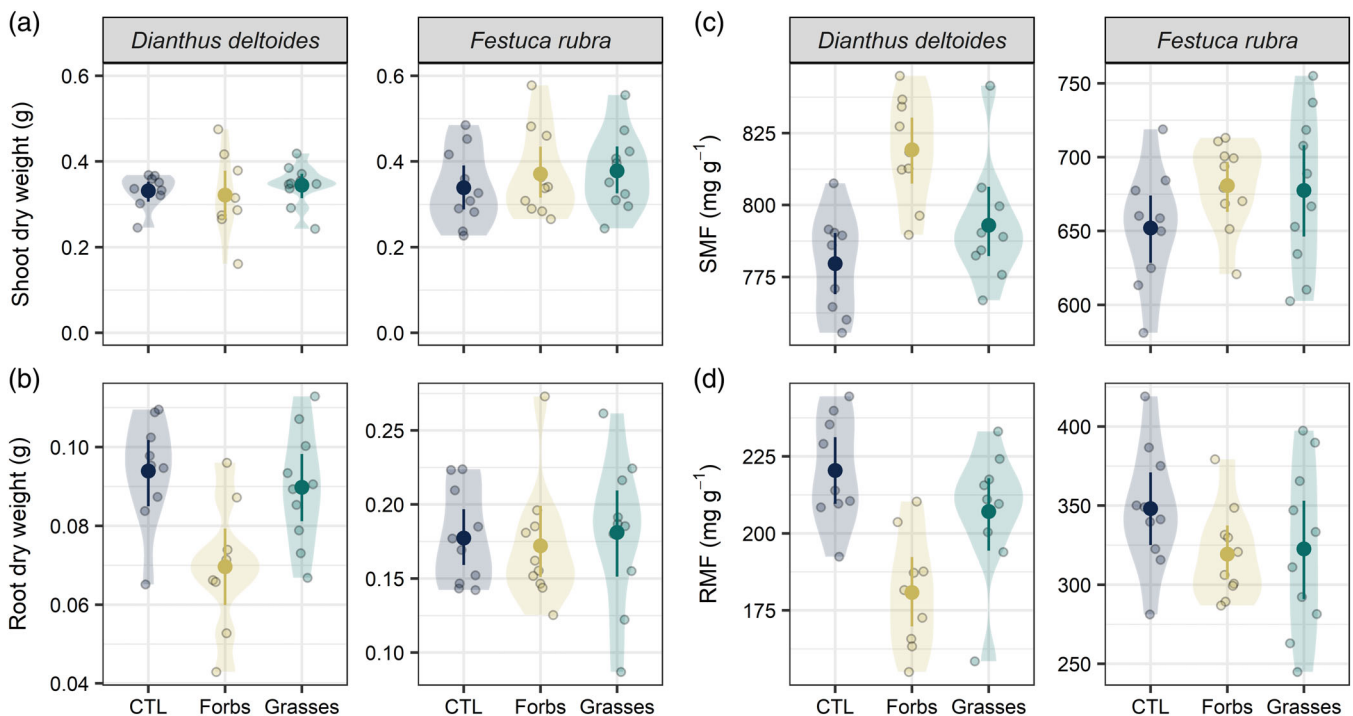
### 3.2 | Soil chemical legacies modulate root foraging in *Dianthus deltoides*, but not in *Festuca rubra*

The two species investigated in this study responded differently to the metabolome found in the soil solutions of forb and grass communities. While *F. rubra* did not show any difference between treatments for all variables measured in this study (Figures 3–6), *D. deltoides*' response depended on whether the soil solution came from a forb or a grass community.

Compared to plants treated with the soil solution collected from CTL mesocosms (CTL), *D. deltoides* individuals treated with the metabolome found in the soil solution of a forb community had a lower root productivity (−26%, Figure 3b), but unchanged shoot productivity (Figure 3a). This led to a greater shoot mass fraction (+5%, Figure 3c) and a lower root mass fraction (−18%, Figure 3d) in *D. deltoides* plants treated with the soil solution of a forb community. This soil chemical legacy effect on biomass production and allocation, however, was not observed when *D. deltoides* was treated with the soil solution of a grass community (Figure 3a–d).

**FIGURE 2** Plant community composition affects the chemical composition and diversity of the metabolome found in the soil solution. (a) Principal component analysis performed on a dataset containing both positive and negative ionisation data. (b) Differences in metabolite richness between soil solution samples collected from CTL (controls, soil only), Forbs and Grasses mesocosms (see Figure 1). (c) Positive chemical diversity–abundance relationship. Panels (b) and (c) rely solely on positive ionisation data (results from negative ionisation data are provided in Figure S4). In Panels (a)–(c), each dot is an individual observation ( $n = 9$  for CTL and  $n = 10$  for Forbs and Grasses) [Colour figure can be viewed at [wileyonlinelibrary.com](https://onlinelibrary.wiley.com)]





**FIGURE 3** Biomass production (a and b) and allocation (c and d) of *D. deltooides* and *F. rubra* when exposed to the metabolome found in the soil solution of plant communities differing in species composition. Soil solution was collected from mesocosms in which a forb (Forbs) or a grass (Grasses) community was sown, as well as from unsown mesocosms containing only soil (CTL). For each treatment, mean values and compatibility intervals are shown ( $n = 9-10$ ). Individual observations and data distributions are displayed at the back of each graph as dots and density plots, respectively. SMF, shoot mass fraction; RMF, root mass fraction. For each response variable, effect sizes and compatibility intervals can be found in Figure S6 [Colour figure can be viewed at [wileyonlinelibrary.com](http://wileyonlinelibrary.com)]

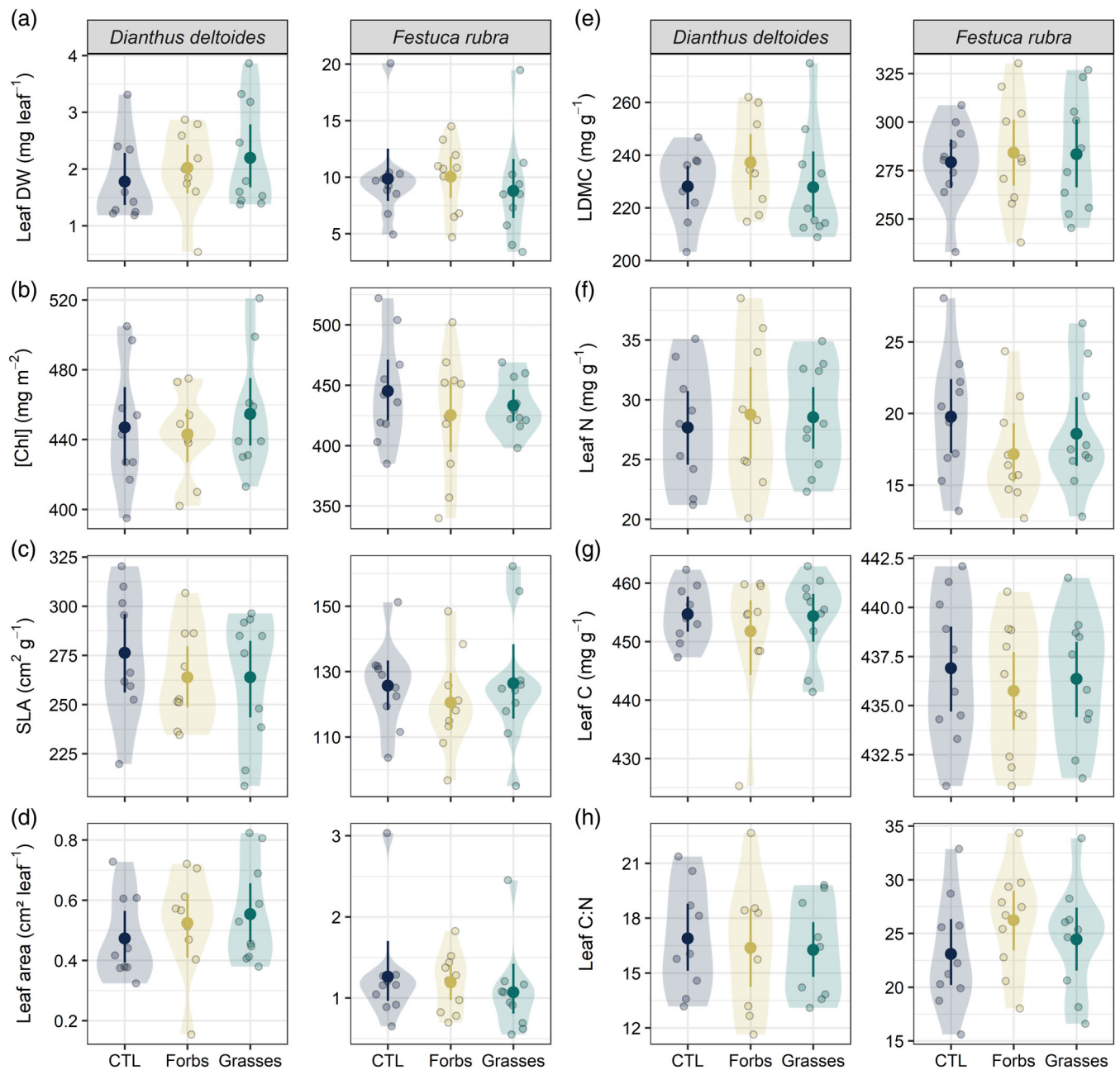
While none of the leaf traits measured on *D. deltooides* were affected by the composition of the metabolome found in the different soil solutions (Figure 4), it had a strong impact on root foraging (Figure 5a) and root morphology (Figure 5b,c). In comparison with CTL plants, *D. deltooides* individuals treated with the soil solution of a grass community had a lower SRL (−13%, Figure 5b) and a lower SRA (−13%, Figure 5c). This effect on SRL and SRA was paralleled by a slight increase in RTD (+8%, Figure 5d), but an effect size of zero (i.e., no increase in RTD) was also compatible with our data. We did not observe any effect of our treatments on root diameter (Figure 5e) or chemical root traits (Figure 5f–h). The SRL, SRA and RTD values of *D. deltooides* individuals that were treated with the soil solution of a forb community were intermediate between the values measured on CTL plants and the values measured on plants treated with the metabolome found in the soil solution of a grass community (Figure 5b–d).

Overall, root foraging—as measured by RSD—decreased when *D. deltooides* was treated with the soil solution of a forb or a grass community (Figure 5a). This decrease in root foraging was stronger when plants were treated with the soil solution from a forb community (−33%) than when plants received the soil solution from a grass community (−16%). Structural equation modelling showed that soil chemical legacies affected the mechanism behind the reduction in root foraging in *D. deltooides* (Figure 6). When soil chemical legacies were

created by a forb community, decreased root foraging was mainly due to a decrease in root biomass production (*root growth-dependent path*, Figure 6a). When soil chemical legacies were created by a grass community, however, root foraging decreased because of a reduction in SRA following a decrease in SRL (*root trait-dependent path*, Figure 6b). Although root foraging decreased when the soil solution of a forb or a grass community was applied to *D. deltooides*, this was not paralleled by a decrease in total N uptake (Figure 6a,b).

## 4 | DISCUSSION

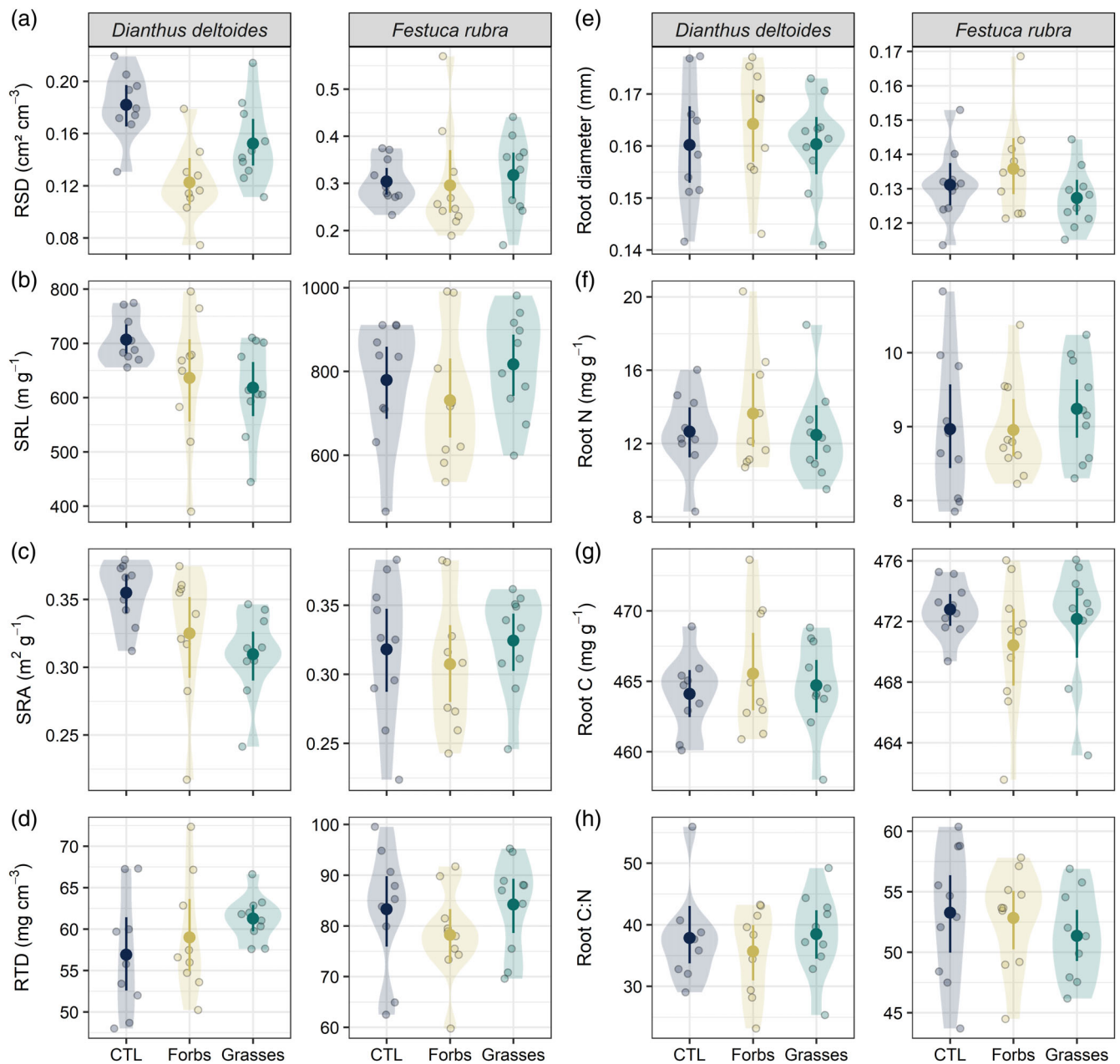
In this study, we demonstrated that soil chemical legacies can affect root responses in later arriving plant individuals and might therefore play an important role for the creation of belowground priority effects. Although *F. rubra* was largely unaffected by soil chemical legacies, we found that root foraging by *D. deltooides* decreased when it was exposed to the metabolome found in the soil solution of a forb or a grass community. This reduction in root foraging by *D. deltooides* arose via two different mechanistic pathways depending on whether soil chemical legacies were created by a forb or a grass community. When *D. deltooides* was treated with the soil solution of a forb community, root foraging decreased because of a decrease in root productivity (*root growth-dependent pathway*). When *D. deltooides* was



**FIGURE 4** Leaf functional traits of *D. deltoides* and *F. rubra* when exposed to the metabolome found in the soil solution of plant communities differing in species composition. Soil solution was collected from mesocosms in which a forb (Forbs) or a grass (Grasses) community was sown, as well as from unsown mesocosms containing only soil (CTL). The following leaf traits were measured: (a) dry weight (DW) of a leaf, (b) leaf chlorophyll concentration ([Chl]), (c) specific leaf area (SLA), (d) area of a leaf, (e) leaf dry matter content (LDMC), (f) leaf N concentration, (g) leaf C concentration, and (h) leaf C:N ratio. For each treatment, mean values and compatibility intervals are shown ( $n = 9-10$ ). Individual observations and data distributions are displayed at the back of each graph as dots and density plots, respectively. For each response variable, effect sizes and compatibility intervals can be found in Figure S7 [Colour figure can be viewed at [wileyonlinelibrary.com](http://wileyonlinelibrary.com)]

treated with the soil solution of a grass community, however, root foraging decreased because of a decrease in SRA (root trait-dependent pathway). These results support the fact that priority effects in plant communities are not only a matter of competition for shared resources, but may also result from niche modification by early-arriving species (i.e., modification of the metabolome found in the soil solution).

Since the composition of root exudates and soil microorganisms is strongly influenced by plant species identity (Bever, 2003; Leff et al., 2018; Mommer et al., 2018; Oburger & Jones, 2018), it is therefore not surprising that the composition and chemical richness of the metabolomes found in the solutions of forb and grass communities differed in our study. Compared to CTL soil solution, the metabolome found in the soil solution of forb communities was characterized by a

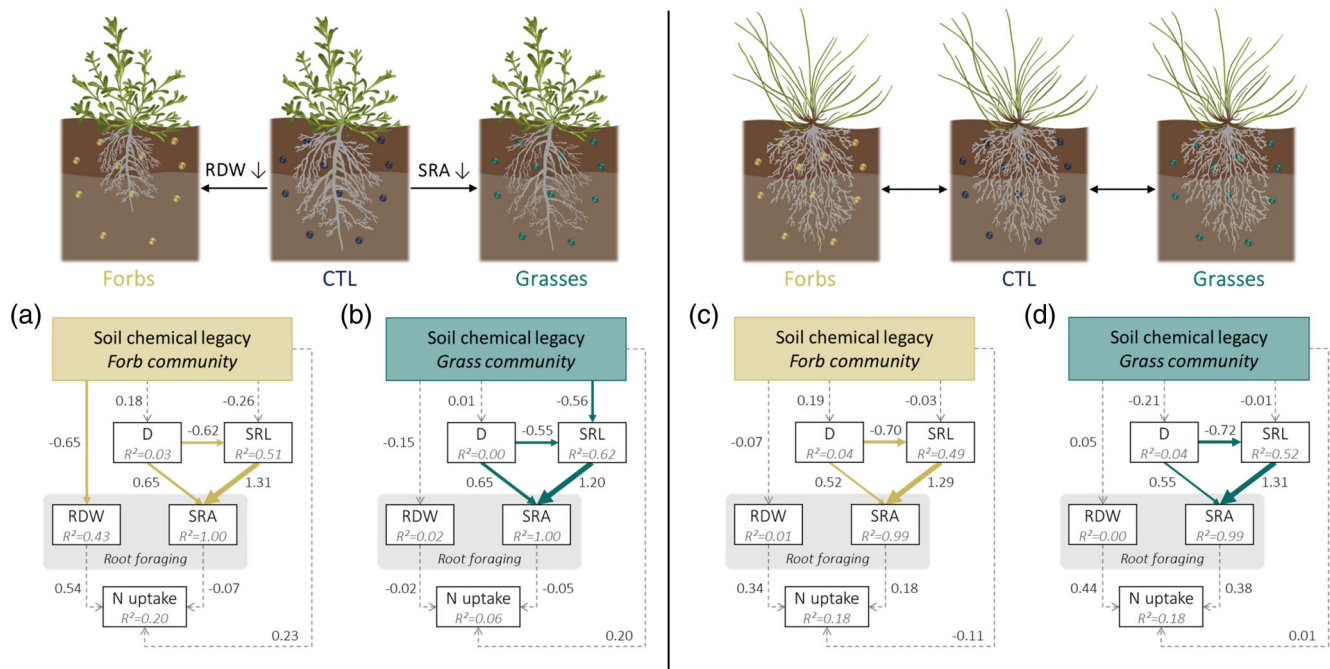


**FIGURE 5** Root functional traits of *D. deltooides* and *F. rubra* when exposed to the metabolome found in the soil solution of plant communities differing in species composition. Soil solution was collected from mesocosms in which a forb (Forbs) or a grass (Grasses) community was sown, as well as from unsown mesocosms containing only soil (CTL). The following root traits were measured: (a) root surface density (RSD), (b) specific root length (SRL), (c) specific root area (SRA), (d) root tissue density (RTD), (e) root diameter, (f) root N concentration, (g) root C concentration, and (h) root C:N ratio. For each treatment, mean values and compatibility intervals are shown ( $n = 9-10$ ). Individual observations and data distributions are displayed at the back of each graph as dots and density plots, respectively. For each response variable, effect sizes and compatibility intervals can be found in Figure S8 [Colour figure can be viewed at [wileyonlinelibrary.com](https://onlinelibrary.wiley.com)]

greater chemical richness and a greater DOC concentration. These results confirm that the identity of early arriving species has a strong impact on the chemical composition of the soil solution's metabolome. Although our metabolomics data apply to plant communities and not isolated plant individuals, our results are consistent with previous studies showing that the rate of C exudation by plant roots (de Vries et al., 2019; Sun et al., 2021) as well as the chemical composition and

diversity of root exudates (Dietz et al., 2019; Herz et al., 2018) strongly depend on species identity.

The two focal species investigated in this study—*D. deltooides* and *F. rubra*—responded differently when treated with the soil solution of a grass or a forb community. While root foraging of single *D. deltooides* individuals dropped when plants were exposed to soil chemical legacies created by forb or grass communities, none of the variables



**FIGURE 6** Soil chemical legacies modulate root foraging in *D. deltooides* (a and b), but not in *F. rubra* (c and d). Reduced root foraging by *D. deltooides* arose via two different mechanistic pathways depending on the composition of the soil solution's metabolome: a root growth-dependent pathway (Forbs) and a root trait-dependent pathway (Grasses). For paths with  $p < .05$ , the thickness of each arrow (either yellow or green) was scaled based on the magnitude of the standardized regression coefficient displayed next to it. Paths with  $p \geq .05$  are represented by dashed grey arrows. (a) *D. deltooides* (CTL vs. Forbs): Fisher's  $C = 17.9$ ,  $df = 12$ ,  $p = .12$ ; (b) *D. deltooides* (CTL vs. Grasses): Fisher's  $C = 7.4$ ,  $df = 12$ ,  $p = .83$ ; (c) *F. rubra* (CTL vs. Forbs): Fisher's  $C = 10.6$ ,  $df = 12$ ,  $p = .57$ ; (d) *F. rubra* (CTL vs. Grasses): Fisher's  $C = 17.7$ ,  $df = 12$ ,  $p = .13$ . D, root diameter; SRL, specific root length; SRA, specific root area; RDW, root dry weight; N uptake, total plant N uptake [Colour figure can be viewed at [wileyonlinelibrary.com](http://wileyonlinelibrary.com)]

measured on *F. rubra* were affected. Such species-specificity is consistent with results from other experiments showing that neighbour presence and identity can both alter root foraging in a species-specific and context-dependent manner (Mahall & Callaway, 1991; Mommer, van Ruijven, Jansen, van de Steeg, & de Kroon, 2012; Padilla et al., 2013; Semchenko, John, & Hutchings, 2007b). PSF experiments have also provided strong support for species-specific root responses to soil legacies (Callaway & Ridenour, 2004; Ristok et al., 2019; van der Putten et al., 2013). Both the direction and magnitude of PSF effects have been shown to vary between individual species (Hendriks et al., 2013, 2015a; Kardol et al., 2007), but also between early and late-successional species (Kardol, Martijn, & Van Der Putten, 2006). Using a large pool of grassland species, Cortois, Schröder-Georgi, Weigelt, van der Putten, and De Deyn (2016) showed that the strength of PSF effects varied between plant functional groups and was related to morphological and biotic root traits. They showed that plants with acquisitive trait values suffered from more negative PSF effects than plants with conservative trait values (Cortois et al., 2016). Interestingly, we found a similar pattern in our study: the species with the most acquisitive trait values (*D. deltooides*) was the only one affected by soil chemical legacies.

The fact that none of the variables measured in our study on *F. rubra* differed between treatments is consistent with previous

studies showing that this species produced a similar amount of root biomass and did not change its root distribution when growing in monocultures or in mixtures (Mommer et al., 2010). In addition, root biomass production and N uptake values of *F. rubra* grown in soil conditioned by conspecifics were either lower (Hendriks, Ravenek, et al., 2015b) or not different (In 't Zandt et al., 2020) from the values measured on individuals grown in soil conditioned by heterospecifics. Altogether, these results suggest that root responses of *F. rubra* seem to be little affected by the identity of neighbours growing next to it or by soil legacy effects. On the contrary, our results showed that *D. deltooides* individuals strongly responded to soil chemical legacies of different plant communities. Despite its lower root productivity, *D. deltooides* was able to take up as much N as *F. rubra*, which shows that *D. deltooides* had a greater competitive ability in our experiment.

Our results showed that the mechanism leading to reduced soil exploration by *D. deltooides* was context-dependent. Depending on whether plants were treated with the soil solution of a forb or a grass community, the observed decrease in root foraging was caused by a reduction in root biomass production or a reduction in SRA, respectively. Interestingly, none of these root responses negatively affected total N uptake, which suggests that plastic root responses such as increased N uptake rates might have played a role (Freschet, Violle,



Bourget, Scherer-Lorenzen, & Fort, 2018; Hendriks, Visser, et al., 2015b). Our results support the idea that chemicals present in the soil solution can carry information about species composition. This adds up to the growing body of evidence showing that soil chemical legacies can trigger context-dependent responses affecting morphological root traits and soil exploration (Semchenko et al., 2014), which might be an important mechanism creating belowground priority effects in both nutrient-rich (Semchenko et al., 2014; Weidlich et al., 2018) and nutrient-poor systems.

Overall, root foraging was more strongly reduced when *D. deltoidea* was treated with the soil solution of a forb community, which supports our hypothesis that late-arriving species would be more affected by soil chemical legacies created by a plant community composed of functionally similar species. The decrease in root biomass production and root mass fraction observed when *D. deltoidea* was treated with the soil solution of a forb community could be a plant's response aiming to lower the intensity of competition between functionally similar species. This hypothesis, however, is not strongly supported by our data because the observed decrease in root biomass production and allocation was not paralleled by a reduction in total N uptake (Figure 6a), which would be expected if the relationship between root foraging and N uptake is positive (Mommer et al., 2011). However, we cannot exclude that the lower root productivity of *D. deltoidea* may have affected the uptake of other soil resources not measured in our study. Alternatively, the observed reduction in root productivity could also be a consequence of the presence of allelochemicals inhibiting root growth in the soil solution of forb communities (Semchenko, Hutchings, & John, 2007a).

When *D. deltoidea* was treated with the soil solution of a grass community, the observed decrease in RSD was solely due to changes in root morphology. In this situation, the lower root foraging capacity of *D. deltoidea* was explained by a decrease in SRL leading to a reduction in SRA. This decrease in SRL was only weakly associated with an increase in RTD, which is consistent with studies reporting SRL and RTD to be related to two orthogonal axes of variation in the root economics space (Bergmann et al., 2020; Kramer-Walter et al., 2016). Root foraging by *D. deltoidea* was the least affected when it was treated with the soil solution of a grass community. This observation is consistent with previous studies showing that forbs tend to grow better with grasses than with other forbs (Cahill, Kembel, Lamb, & Keddy, 2008), or that forbs grow better with heterospecifics than conspecifics (Semchenko, Abakumova, Lepik, & Zobel, 2013). This is also consistent with PSF experiments showing that forbs grow better on soil conditioned by grasses than on soil conditioned by other forbs (Heinen et al., 2020; Hendriks et al., 2013). Based on recent evidence suggesting that root trait displacement enhances local species coexistence (Valverde-Barrantes, Smemo, Feinstein, Kershner, & Blackwood, 2013) and that plants with lower SRL are better at tolerating interspecific competition (Semchenko, Lepik, Abakumova, & Zobel, 2018) and may be better able to cope with nitrogen stress (Freschet et al., 2018), we hypothesize that the production of roots with a lower SRL by *D. deltoidea* is

probably a plastic response that may increase plant fitness in the presence of grass competitors.

The results presented in this study pave the way for further research aimed at providing a more detailed understanding of the biological mechanisms underlying individual plant responses to soil chemical cues, as well as the ecological consequences of these interactions on plant communities. In particular, we argue that more research is needed to elucidate the origin and identity of the metabolites driving the growth and trait responses in later arrivers. Although methodologically challenging (Peters et al., 2018; Uthe et al., 2020), the identification of key metabolites would be an important first step for the realisation of bioassays designed to unravel the molecular mechanisms of root-root interactions. In addition, studies investigating the relationship between phytochemical diversity/abundance in the rhizosphere and priority effect strength are needed to improve our capacity to predict how plant order of arrival affects species coexistence. Lastly, our experimental design did not allow us to take the spatiotemporal dynamics of the metabolome found in the soil solution of plant communities into account. Considering that the quality and quantity of metabolites found in the rhizosphere vary in space and time (de Vries et al., 2019; Oburger & Jones, 2018; Perry et al., 2007), experiments considering these spatiotemporal dynamics would offer unique opportunities to shed light on chemically mediated plant-plant interactions occurring in the soil.

To conclude, our work shows that the composition and chemical diversity of the soil solution's metabolome depend on the species composition of plant communities. In addition, it reveals that soil chemical legacies can cause belowground priority effects in some grassland species by affecting root foraging of later arriving plants. Importantly, the soil chemical legacy effects observed in our study were dependent on the composition of the soil solution's metabolome since it affected the biological mechanism responsible for altered root foraging in later arriving plants (i.e., root foraging changed because of a modification in root traits or root biomass production).

## ACKNOWLEDGMENTS

The authors thank Dr. Thomas Niemeyer for his great technical support, as well as Lukas van Treeck, Anaïs Verstraeten and Ksenia Cherepanova for their invaluable help in measuring root traits. This research project greatly benefited from the online course 'Image analysis methods for biologists' taught by Tony Pridmore, Andrew French, Michael Pound and Amy Lowe (University of Nottingham, UK). The plant illustrations used in this paper were made by Carolina Levicek ([www.carolinalevicek.com](http://www.carolinalevicek.com)). The authors thank Amit Kumar and Inés Alonso-Crespo for their constructive comments on the manuscript. For this project, B.M.D. was supported by a research start-up grant (Forschungsansubfinanzierung) from Leuphana University Lüneburg (Germany). N.M.V.D. and A.W. gratefully acknowledge the German Research Foundation for funding the German Centre for Integrative Biodiversity Research (iDiv) Halle-Jena-Leipzig (DFG-FZT 118-202548816). Open Access funding enabled and organized by ProjektDEAL.



Open access funding enabled and organized by Projekt DEAL.

## AUTHOR CONTRIBUTIONS

Benjamin M. Delory conceived and designed the experiment; Benjamin M. Delory, Hannes Schempp and Sina Maria Spachmann performed the experiment; Benjamin M. Delory, Hannes Schempp, Sina Maria Spachmann, Laura Störzer and Vicky M. Temperton collected data; Alexander Weinhold and Nicole M. van Dam performed the metabolomics analyses; Benjamin M. Delory and Alexander Weinhold processed metabolomics data; Benjamin M. Delory analysed the data and led the writing of the manuscript. All authors contributed critically to the drafts and gave final approval for publication.

## DATA AVAILABILITY STATEMENT

The data and R codes that support the findings of this study are openly available in Zenodo at <https://doi.org/10.5281/zenodo.4010162>.

## ORCID

Benjamin M. Delory  <https://orcid.org/0000-0002-1190-8060>

Nicole M. van Dam  <https://orcid.org/0000-0003-2622-5446>

Vicky M. Temperton  <https://orcid.org/0000-0003-0543-4521>

Alexander Weinhold  <https://orcid.org/0000-0003-1418-7788>

## REFERENCES

- Amrhein, V., Greenland, S., & McShane, B. (2019). Scientists rise up against statistical significance. *Nature*, 567, 305–307.
- Bardgett, R. D., Mommer, L., & de Vries, F. T. (2014). Going underground: Root traits as drivers of ecosystem processes. *Trends in Ecology and Evolution*, 29, 692–699.
- Benton, H. P., Want, E. J., & Ebbels, T. M. D. (2010). Correction of mass calibration gaps in liquid chromatography-mass spectrometry metabolomics data. *Bioinformatics*, 26, 2488–2489.
- Bergmann, J., Weigelt, A., van der Plas, F., Laughlin, D. C., Kuyper, T. W., Guerrero-Ramirez, N., ... Mommer, L. (2020). The fungal collaboration gradient dominates the root economics space in plants. *Science Advances*, 6, eaba3756.
- Bertin, C., Yang, X., & Weston, L. A. (2003). The role of root exudates and allelochemicals in the rhizosphere. *Plant and Soil*, 256, 67–83.
- Bever, J. D. (2003). Soil community feedback and the coexistence of competitors: Conceptual frameworks and empirical tests. *New Phytologist*, 157, 465–473.
- Bever, J. D., Dickie, I. A., Facelli, E., Facelli, J. M., Klironomos, J., Moora, M., ... Zobel, M. (2010). Rooting theories of plant community ecology in microbial interactions. *Trends in Ecology & Evolution*, 25, 468–478.
- Biedrzycki, M. L., Jilany, T. A., Dudley, S. A., & Bais, H. P. (2010). Root exudates mediate kin recognition in plants. *Communicative & Integrative Biology*, 3, 28–35.
- Cahill, J. F., Kembel, S. W., Lamb, E. G., & Keddy, P. A. (2008). Does phylogenetic relatedness influence the strength of competition among vascular plants? *Perspectives in Plant Ecology, Evolution and Systematics*, 10, 41–50.
- Callaway, R. M., & Aschehoug, E. T. (2000). Invasive plants versus their new and old neighbors: A mechanism for exotic invasion. *Science*, 290, 521–523.
- Callaway, R. M., & Ridenour, W. M. (2004). Novel weapons: Invasive success and the evolution of increased competitive ability. *Frontiers in Ecology and the Environment*, 2, 436–443.
- Chase, J. M. (2003). Community assembly: When should history matter? *Oecologia*, 136, 489–498.
- Cortois, R., Schröder-Georgi, T., Weigelt, A., van der Putten, W. H., & De Deyn, G. B. (2016). Plant-soil feedbacks: Role of plant functional group and plant traits. *Journal of Ecology*, 104, 1608–1617.
- van Dam, N. M., & Bouwmeester, H. J. (2016). Metabolomics in the rhizosphere: Tapping into belowground chemical communication. *Trends in Plant Science*, 21, 256–265.
- Delory, B. M., Delaplace, P., Fauconnier, M.-L., & du Jardin, P. (2016). Root-emitted volatile organic compounds: Can they mediate belowground plant-plant interactions? *Plant and Soil*, 402, 1–26.
- Delory, B. M., Weidlich, E. W. A., van Duijnen, R., Pagès, L., & Temperton, V. M. (2018). Measuring plant root traits under controlled and field conditions: Step-by-step procedures. In D. Ristova & E. Barbez (Eds.), *Root development. Methods in Molecular Biology* (pp. 3–22). New York, NY: Humana Press.
- Delory, B. M., Weidlich, E. W. A., von Gillhaussen, P., & Temperton, V. M. (2019a). When history matters: The overlooked role of priority effects in grassland overyielding. *Functional Ecology*, 33, 2369–2380.
- Delory, B. M., Weidlich, E. W. A., Kunz, M., Neitzel, J., & Temperton, V. M. (2019b). The exotic species *Senecio inaequidens* pays the price for arriving late in temperate European grassland communities. *Oecologia*, 191, 657–671.
- Delory, B. M., Weidlich, E. W. A., Meder, L., Lütje, A., van Duijnen, R., Weidlich, R., & Temperton, V. M. (2017). Accuracy and bias of methods used for root length measurements in functional root research. *Methods in Ecology and Evolution*, 8, 1594–1606.
- Dietz, S., Herz, K., Döll, S., Haider, S., Jandt, U., Bruehlheide, H., & Scheel, D. (2019). Semi-polar root exudates in natural grassland communities. *Ecology and Evolution*, 9, 5526–5541.
- Eisenhauer, N., Lanoue, A., Strecker, T., Scheu, S., Steinauer, K., Thakur, M. P., & Mommer, L. (2017). Root biomass and exudates link plant diversity with soil bacterial and fungal biomass. *Scientific Reports*, 7, 44641.
- Fargione, J., Brown, C. S., & Tilman, D. (2004). Community assembly and invasion: An experimental test of neutral versus niche processes. *Proceedings of the National Academy of Sciences of the United States of America*, 101, 8916–8920.
- Freschet, G. T., Violle, C., Bourget, M. Y., Scherer-Lorenzen, M., & Fort, F. (2018). Allocation, morphology, physiology, architecture: The multiple facets of plant above- and below-ground responses to resource stress. *New Phytologist*, 219, 1338–1352.
- Fukami, T. (2015). Historical contingency in community assembly: Integrating niches, species pools, and priority effects. *Annual Review of Ecology Evolution and Systematics*, 46, 1–23.
- Fukami, T., Dickie, I. A., Paula, W. J., Paulus, B. C., Park, D., Roberts, A., ... Allen, R. B. (2010). Assembly history dictates ecosystem functioning: Evidence from wood decomposer communities. *Ecology Letters*, 13, 675–684.
- Grman, E., & Suding, K. N. (2010). Within-year soil legacies contribute to strong priority effects of exotics on native California grassland communities. *Restoration Ecology*, 18, 664–670.
- Halliday, F. W., Penczykowski, R. M., Barrès, B., Eck, J. L., Numminen, E., & Laine, A.-L. (2020). Facilitative priority effects drive parasite assembly under coinfection. *Nature Ecology & Evolution*, 4, 1510–1521. <https://doi.org/10.1038/s41559-020-01289-9>
- Heinen, R., Hannula, S. E., Long, J. R., Huberty, M., Jongen, R., Kielak, A., ... Bezemer, T. M. (2020). Plant community composition steers grassland vegetation via soil legacy effects. *Ecology Letters*, 23, 973–982.
- Hendriks, M., Mommer, L., de Caluwe, H., Smit-Tiekstra, A. E., van der Putten, W. H., & de Kroon, H. (2013). Independent variations of plant and soil mixtures reveal soil feedback effects on plant community overyielding. *Journal of Ecology*, 101, 287–297.

- Hendriks, M., Ravenek, J. M., Smit-Tiekstra, A. E., van der Paauw, J. W., de Caluwe, H., van der Putten, W. H., ... Mommer, L. (2015a). Spatial heterogeneity of plant-soil feedback affects root interactions and inter-specific competition. *New Phytologist*, 207, 830–840.
- Hendriks, M., Visser, E. J. W., Visschers, I. G. S., Aarts, B. H. J., Caluwe, H., Smit-Tiekstra, A. E., ... Mommer, L. (2015b). Root responses of grassland species to spatial heterogeneity of plant-soil feedback. *Functional Ecology*, 29, 177–186.
- Henneron, L., Cros, C., Picon-Cochard, C., Rahimian, V., & Fontaine, S. (2020). Plant economic strategies of grassland species control soil carbon dynamics through rhizodeposition. *Journal of Ecology*, 108, 528–545.
- Herz, K., Dietz, S., Gorzalka, K., Haider, S., Jandt, U., Scheel, D., & Bruehlheide, H. (2018). Linking root exudates to functional plant traits. *PLoS One*, 13, e0204128.
- Hess, M. C. M., Buisson, E., Fontes, H., Bacon, L., Sabatier, F., & Mesléard, F. (2020). Giving recipient communities a greater head start and including productive species boosts early resistance to invasion. *Applied Vegetation Science*, 23, 340–352.
- Hu, L., Robert, C. A. M., Cadot, S., Zhang, X., Ye, M., Li, B., ... Erb, M. (2018). Root exudate metabolites drive plant-soil feedbacks on growth and defense by shaping the rhizosphere microbiota. *Nature Communications*, 9, 2738.
- Huber, W., Carey, V. J., Gentleman, R., Anders, S., Carlson, M., Carvalho, B. S., ... Morgan, M. (2015). Orchestrating high-throughput genomic analysis with bioconductor. *Nature Methods*, 12, 115–121.
- In 't Zandt, D., Hoekstra, N. J., Wagemaker, C. A. M., de Caluwe, H., Smit-Tiekstra, A. E., Visser, E. J. W., & de Kroon, H. (2020). Local soil legacy effects in a multi-species grassland community are underlain by root foraging and soil nutrient availability. *Journal of Ecology*, 108, 2243–2255. <https://doi.org/10.1111/1365-2745.13449>
- Kardol, P., Cornips, N. J., van Kempen, M. M. L., Bakx-Schotman, J. M. T., & van der Putten, W. H. (2007). Microbe-mediated plant-soil feedback causes historical contingency effects in plant community assembly. *Ecological Monographs*, 77, 147–162.
- Kardol, P., Martijn, B. T., & Van Der Putten, W. H. (2006). Temporal variation in plant-soil feedback controls succession. *Ecology Letters*, 9, 1080–1088.
- Kardol, P., Souza, L., & Classen, A. T. (2013). Resource availability mediates the importance of priority effects in plant community assembly and ecosystem function. *Oikos*, 122, 84–94.
- Kassambara, A. (2020). ggpubr: “ggplot2” Based Publication Ready Plots. R package version 0.4.0. Retrieved from <https://CRAN.R-project.org/package=ggpubr>
- Klironomos, J. N. (2002). Feedback with soil biota contributes to plant rarity and invasiveness in communities. *Nature*, 417, 67–70.
- Kokla, M., Virtanen, J., Kolehmainen, M., Paananen, J., & Hanhineva, K. (2019). Random forest-based imputation outperforms other methods for imputing LC-MS metabolomics data: A comparative study. *BMC Bioinformatics*, 20, 492.
- Kong, C.-H., Zhang, S.-Z., Li, Y.-H., Xia, Z.-C., Yang, X.-F., Meiners, S. J., & Wang, P. (2018). Plant neighbor detection and allelochemical response are driven by root-secreted signaling chemicals. *Nature Communications*, 9, 3867.
- Korenblum, E., Dong, Y., Szymanski, J., Panda, S., Jozwiak, A., Massalha, H., ... Aharoni, A. (2020). Rhizosphere microbiome mediates systemic root metabolite exudation by root-to-root signaling. *Proceedings of the National Academy of Sciences of the United States of America*, 117, 3874–3883.
- Körner, C., Stöcklin, J., Reuther-Thiébaud, L., & Pelaez-Riedl, S. (2008). Small differences in arrival time influence composition and productivity of plant communities. *New Phytologist*, 177, 698–705.
- Kramer-Walter, K. R., Bellingham, P. J., Millar, T. R., Smissen, R. D., Richardson, S. J., & Laughlin, D. C. (2016). Root traits are multi-dimensional: Specific root length is independent from root tissue density and the plant economic spectrum. *Journal of Ecology*, 104, 1299–1310.
- Kuhl, C., Tautenhahn, R., Böttcher, C., Larson, T. R., & Neumann, S. (2012). CAMERA: An integrated strategy for compound spectra extraction and annotation of liquid chromatography/mass spectrometry data sets. *Analytical Chemistry*, 84, 283–289.
- Kursa, M. B., & Rudnicki, W. R. (2010). Feature selection with the boruta package. *Journal of Statistical Software*, 36, 1–13.
- Lange, M., Eisenhauer, N., Sierra, C. A., Bessler, H., Engels, C., Griffiths, R. I., ... Gleixner, G. (2015). Plant diversity increases soil microbial activity and soil carbon storage. *Nature Communications*, 6, 6707.
- Lê, S., Josse, J., & Husson, F. (2008). FactoMineR: An R package for multi-variate analysis. *Journal of Statistical Software*, 25, 1–18.
- Lefcheck, J. S. (2016). piecewiseSEM: Piecewise structural equation modelling in R for ecology, evolution, and systematics. *Methods in Ecology and Evolution*, 7, 573–579.
- Leff, J. W., Bardgett, R. D., Wilkinson, A., Jackson, B. G., Pritchard, W. J., Long, J. R., ... Fierer, N. (2018). Predicting the structure of soil communities from plant community taxonomy, phylogeny, and traits. *The ISME Journal*, 12, 1794–1805.
- Lenth R. (2018) Emmeans: Estimated Marginal Means, aka Least-Squares Means. R package version 1.4.3. Retrieved from <https://CRAN.R-project.org/package=emmeans>
- Liaw, A., & Wiener, M. (2002). Classification and regression by randomForest. *R News*, 2, 18–22.
- MacArthur, R., & Levins, R. (1967). The limiting similarity, convergence, and divergence of coexisting species. *The American Naturalist*, 101, 377–385.
- Mahall, B. E., & Callaway, R. M. (1991). Root communication among desert shrubs. *Proceedings of the National Academy of Sciences of the United States of America*, 88, 874–876.
- Martin, L. M., & Wilsey, B. J. (2012). Assembly history alters alpha and beta diversity, exotic-native proportions and functioning of restored prairie plant communities. *Journal of Applied Ecology*, 49, 1436–1445.
- Mommer, L., Cotton, T. E. A., Raaijmakers, J. M., Termorshuizen, A. J., van Ruijven, J., Hendriks, M., ... Dumbrell, A. J. (2018). Lost in diversity: The interactions between soil-borne fungi, biodiversity and plant productivity. *New Phytologist*, 218, 542–553.
- Mommer, L., Kirkegaard, J., & van Ruijven, J. (2016). Root-root interactions: Towards a rhizosphere framework. *Trends in Plant Science*, 21, 209–217.
- Mommer, L., van Ruijven, J., De Caluwe, H., Smit-Tiekstra, A. E., Wagemaker, C. A. M., Joop, O. N., ... de Kroon, H. (2010). Unveiling below-ground species abundance in a biodiversity experiment: A test of vertical niche differentiation among grassland species. *Journal of Ecology*, 98, 1117–1127.
- Mommer, L., van Ruijven, J., Jansen, C., van de Steeg, H. M., & de Kroon, H. (2012). Interactive effects of nutrient heterogeneity and competition: Implications for root foraging theory? *Functional Ecology*, 26, 66–73.
- Mommer, L., Visser, E. J. W., van Ruijven, J., de Caluwe, H., Pierik, R., & de Kroon, H. (2011). Contrasting root behaviour in two grass species: A test of functionality in dynamic heterogeneous conditions. *Plant and Soil*, 344, 347–360.
- Oburger, E., & Jones, D. L. (2018). Sampling root exudates—Mission impossible? *Rhizosphere*, 6, 116–133.
- Oburger, E., & Schmidt, H. (2016). New methods to unravel rhizosphere processes. *Trends in Plant Science*, 21, 243–255.

- Padilla, F. M., Mommer, L., de Caluwe, H., Smit-Tiekstra, A. E., Wagemaker, C. A. M., Ouborg, N. J., & de Kroon, H. (2013). Early root overproduction not triggered by nutrients decisive for competitive success belowground. *PLoS One*, 8, e55805.
- Perry, L. G., Alford, E. R., Horiuchi, J., Paschke, M. W., & Vivanco, J. M. (2007). Chemical signals in the rhizosphere: Root-root and root-microbe communication. In R. Pinton, Z. Varanini, & P. Nannipieri (Eds.), *The rhizosphere: biochemistry and organic substances at the soil-plant interface* (pp. 297–330). Boca Raton, FL: CRC Press.
- Peters, K., Worrlich, A., Weinhold, A., Alka, O., Balcke, G., Birkemeyer, C., ... Dam, N. (2018). Current challenges in plant eco-metabolomics. *International Journal of Molecular Sciences*, 19, 1385.
- van der Putten, W. H., Bardgett, R. D., Bever, J. D., Bezemer, T. M., Casper, B. B., Fukami, T., ... Wardle, D. A. (2013). Plant-soil feedbacks: The past, the present and future challenges. *Journal of Ecology*, 101, 265–276.
- R Core Team. (2019). R: A language and environment for statistical computing. R Foundation for Statistical Computing, Vienna, Austria. Retrieved from <http://www.r-project.org/>
- R Core Team. (2020). R: A language and environment for statistical computing. R Foundation for Statistical Computing, Vienna, Austria. Retrieved from <http://www.r-project.org/>
- Rillig, M. C., Ryo, M., Lehmann, A., Aguilar-Trigueros, C. A., Buchert, S., Wulf, A., ... Yang, G. (2019). The role of multiple global change factors in driving soil functions and microbial biodiversity. *Science*, 366, 886–890.
- Ristok, C., Poeschl, Y., Dudenhöffer, J., Ebeling, A., Eisenhauer, N., Vergara, F., ... Weinhold, A. (2019). Plant species richness elicits changes in the metabolome of grassland species via soil biotic legacy. *Journal of Ecology*, 107, 2240–2254.
- Rose, L. (2017). Pitfalls in root trait calculations: How ignoring diameter heterogeneity can lead to overestimation of functional traits. *Frontiers in Plant Science*, 8, 1–5.
- Rose, L., & Lobet, G. (2019). Accuracy of image analysis tools for functional root traits: A comment on Delory et al. (2017). *Methods in Ecology and Evolution*, 10, 702–711.
- Sasse, J., Martinoia, E., & Northen, T. (2018). Feed your friends: Do plant exudates shape the root microbiome? *Trends in Plant Science*, 23, 25–41.
- Seethepalli A. & York L. M. (2020). RhizoVision Explorer—Interactive software for generalized root image analysis designed for everyone (Version 2.0.0beta1). Zenodo.
- Semchenko, M., Abakumova, M., Lepik, A., & Zobel, K. (2013). Plants are least suppressed by their frequent neighbours: The relationship between competitive ability and spatial aggregation patterns. *Journal of Ecology*, 101, 1313–1321.
- Semchenko, M., Hutchings, M. J., & John, E. A. (2007a). Challenging the tragedy of the commons in root competition: Confounding effects of neighbour presence and substrate volume. *Journal of Ecology*, 95, 252–260.
- Semchenko, M., John, E. A., & Hutchings, M. J. (2007b). Effects of physical connection and genetic identity of neighbouring ramets on root-placement patterns in two clonal species. *New Phytologist*, 176, 644–654.
- Semchenko, M., Lepik, A., Abakumova, M., & Zobel, K. (2018). Different sets of belowground traits predict the ability of plant species to suppress and tolerate their competitors. *Plant and Soil*, 424, 157–169.
- Semchenko, M., Saar, S., & Lepik, A. (2014). Plant root exudates mediate neighbour recognition and trigger complex behavioural changes. *New Phytologist*, 204, 631–637.
- Da Silva, R. R., Dorrestein, P. C., & Quinn, R. A. (2015). Illuminating the dark matter in metabolomics. *Proceedings of the National Academy of Sciences of the United States of America*, 112, 12549–12550.
- Smith, C. A., Want, E. J., O'maille, G., Abagyan, R., & Siuzdak, G. (2006). XCMS: Processing mass spectrometry data for metabolite profiling using nonlinear peak alignment, matching, and identification. *Analytical Chemistry*, 78, 779–787.
- Solarik, K. A., Cazes, K., Messier, C., Bergeron, Y., & Gravel, D. (2020). Priority effects will impede range shifts of temperate tree species into the boreal forest. *Journal of Ecology*, 108, 1155–1173.
- Stekhoven, D. J., & Bühlmann, P. (2012). MissForest—Non-parametric missing value imputation for mixed-type data. *Bioinformatics*, 28, 112–118.
- Strehmel, N., Böttcher, C., Schmidt, S., & Scheel, D. (2014). Profiling of secondary metabolites in root exudates of *Arabidopsis thaliana*. *Phytochemistry*, 108, 35–46.
- Stuble, K. L., & Souza, L. (2016). Priority effects: Natives, but not exotics, pay to arrive late. *Journal of Ecology*, 104, 987–993.
- Sun, L., Ataka, M., Han, M., Han, Y., Gan, D., Xu, T., ... Zhu, B. (2021). Root exudation as a major competitive fine-root functional trait of 18 coexisting species in a subtropical forest. *New Phytologist*, 229, 259–271.
- Tautenhahn, R., Böttcher, C., & Neumann, S. (2008). Highly sensitive feature detection for high resolution LC/MS. *BMC Bioinformatics*, 9, 504.
- Temperton, V. M., Baasch, A., von Gillhaussen, P., & Kirmer, A. (2016). Assembly theory for restoring ecosystem structure and functioning: Timing is everything? In M. A. Palmer, J. B. Zedler, & D. A. Falk (Eds.), *Foundations of restoration ecology* (2nd ed., pp. 245–270). Washington, DC: Island Press.
- Uthe, H., van Dam, N. M., Hervé, M. R., Sorokina, M., Peters, K., & Weinhold, A. (2020). A practical guide to implementing metabolomics in plant ecology and biodiversity research. *Advances in Botanical Research*. <http://dx.doi.org/10.1016/bs.abr.2020.09.019>.
- Valverde-Barrantes, O. J., Smemo, K. A., Feinstein, L. M., Kershner, M. W., & Blackwood, C. B. (2013). The distribution of below-ground traits is explained by intrinsic species differences and intraspecific plasticity in response to root neighbours. *Journal of Ecology*, 101, 933–942.
- de Vries, F. T., Williams, A., Stringer, F., Willcocks, R., McEwing, R., Langridge, H., & Straathof, A. L. (2019). Changes in root-exudate-induced respiration reveal a novel mechanism through which drought affects ecosystem carbon cycling. *New Phytologist*, 224, 132–145.
- Wang, N.-Q., Kong, C.-H., Wang, P., & Meiners, S. J. (2020). Root exudate signals in plant-plant interactions. *Plant, Cell & Environment*. <http://dx.doi.org/10.1111/pce.13892>.
- Wasserstein, R. L., Schirm, A. L., & Lazar, N. A. (2019). Moving to a world beyond “ $p < 0.05$ ”. *The American Statistician*, 73, 1–19.
- Weidlich, E. W. A., von Gillhaussen, P., Delory, B. M., Blossfeld, S., Poorter, H., & Temperton, V. M. (2017). The importance of being first: Exploring priority and diversity effects in a grassland field experiment. *Frontiers in Plant Science*, 7, 1–12.
- Weidlich, E. W. A., von Gillhaussen, P., Max, J. F. J., Delory, B. M., Jablonowski, N. D., Rascher, U., & Temperton, V. M. (2018). Priority effects caused by plant order of arrival affect below-ground productivity. *Journal of Ecology*, 106, 774–780.
- Weidlich, E. W. A., Nelson, C. R., Maron, J. L., Callaway, R. M., Delory, B. M., Temperton, V. M. (2021). Priority effects and ecological restoration. *Restoration Ecology*, 29(1), e13317.
- Werner, C. M., Stuble, K. L., Groves, A. M., & Young, T. P. (2020). Year effects: Interannual variation as a driver of community assembly dynamics. *Ecology*, 101(9), e03104.

- Werner, C. M., Vaughn, K. J., Stuble, K. L., Wolf, K., & Young, T. P. (2016). Persistent asymmetrical priority effects in a California grassland restoration experiment. *Ecological Applications*, 26, 1624–1632.
- Wetzel, W. C., & Whitehead, S. R. (2020). The many dimensions of phytochemical diversity: Linking theory to practice. *Ecology Letters*, 23, 16–32.
- Wickham, H. (2016). *ggplot2: Elegant graphics for data analysis*. New York: Springer-Verlag.
- Williams, A., & de Vries, F. T. (2019). Plant root exudation under drought: Implications for ecosystem functioning. *New Phytologist*, 225, 1899–1905.
- Wilsey, B. (2020). Restoration in the face of changing climate: importance of persistence, priority effects, and species diversity. *Restoration Ecology*, <http://dx.doi.org/10.1111/rec.13132>.
- Wilsey, B. J., Barber, K., & Martin, L. M. (2015). Exotic grassland species have stronger priority effects than natives regardless of whether

they are cultivated or wild genotypes. *New Phytologist*, 205, 928–937.

## SUPPORTING INFORMATION

Additional supporting information may be found online in the Supporting Information section at the end of this article.

**How to cite this article:** Delory BM, Schempp H, Spachmann SM, et al. Soil chemical legacies trigger species-specific and context-dependent root responses in later arriving plants. *Plant Cell Environ*. 2021;44:1215–1230. <https://doi.org/10.1111/pce.13999>