

Farmed areas predict the distribution of amphibian ponds in a traditional rural landscape

Hartel, Tibor; von Wehrden, Henrik

Published in:
PLoS ONE

DOI:
[10.1371/journal.pone.0063649](https://doi.org/10.1371/journal.pone.0063649)

Publication date:
2013

Document Version
Publisher's PDF, also known as Version of record

[Link to publication](#)

Citation for pulished version (APA):
Hartel, T., & von Wehrden, H. (2013). Farmed areas predict the distribution of amphibian ponds in a traditional rural landscape. *PLoS ONE*, 8(5), Article e63649. <https://doi.org/10.1371/journal.pone.0063649>

General rights

Copyright and moral rights for the publications made accessible in the public portal are retained by the authors and/or other copyright owners and it is a condition of accessing publications that users recognise and abide by the legal requirements associated with these rights.

- Users may download and print one copy of any publication from the public portal for the purpose of private study or research.
- You may not further distribute the material or use it for any profit-making activity or commercial gain
- You may freely distribute the URL identifying the publication in the public portal ?

Take down policy

If you believe that this document breaches copyright please contact us providing details, and we will remove access to the work immediately and investigate your claim.

Farmed Areas Predict the Distribution of Amphibian Ponds in a Traditional Rural Landscape

Tibor Hartel^{1,2,3*}, Henrik von Wehrden^{1,4,5}

1 Institute of Ecology, Faculty of Sustainability, Leuphana University Lüneburg, Lüneburg, Germany, **2** Sapiientia University, Department of Environmental Sciences, Cluj-Napoca, Romania, **3** Ovidius University Constanta, Faculty of Natural and Agricultural Sciences, Constanța, Romania, **4** Centre for Methods, Leuphana University Lüneburg, Lüneburg, Germany, **5** Research Institute of Wildlife Ecology, Vienna, Austria

Abstract

Background: Traditional rural landscapes of Eastern Europe are undergoing major changes due to agricultural intensification, land abandonment, change in agricultural practices and infrastructural development. Small man-made ponds are important yet vulnerable components of rural landscapes. Despite their important role for biodiversity, these ponds tend to be excluded from conservation strategies.

Methodology/Findings: Our study was conducted in a traditional rural landscape in Eastern Europe. The aim of this study is twofold: (i) to model the distribution of four major man-made pond types and (ii) to present the importance of man-made ponds for the endangered Yellow Bellied Toad (*Bombina variegata*) and the Common Toad (*Bufo bufo*). Six environmental variables were used to model pond distribution: Corine landcover, the heterogeneity of the landcover, slope, road distance, distance to closest village and the human population density. Land cover heterogeneity was the most important driver for the distribution of fishponds. Areas used for agriculture with significant areas of natural vegetation were the most important predictors for the distribution of temporary ponds. In addition, areas covered by transitional woodland and scrub were important for the open cattle ponds. *Bombina variegata* was found predominantly in the temporary ponds (e.g. ponds created by cattle and buffalo, dirt road ponds and concrete ponds created for livestock drinking) and *Bufo bufo* in fishponds.

Conclusions/Significance: Our Maxent models revealed that the highest probability of occurrence for amphibian ponds was in areas used as farmland. The traditional farming practices combined with a low level of infrastructure development produces a large number of amphibian ponds. The challenge is to harmonize economic development and the maintenance of high densities of ponds in these traditional rural landscapes.

Citation: Hartel T, von Wehrden H (2013) Farmed Areas Predict the Distribution of Amphibian Ponds in a Traditional Rural Landscape. PLoS ONE 8(5): e63649. doi:10.1371/journal.pone.0063649

Editor: Benedikt R. Schmidt, Universität Zurich, Switzerland

Received: November 27, 2012; **Accepted:** April 5, 2013; **Published:** May 21, 2013

Copyright: © 2013 Hartel, von Wehrden. This is an open-access article distributed under the terms of the Creative Commons Attribution License, which permits unrestricted use, distribution, and reproduction in any medium, provided the original author and source are credited.

Funding: Data collection was made with the support of European Regional Development Fund (ERDF) through Sectorial Operational Plan - Environment (POS Mediu) under the project "For nature and local communities - the basis for a Natura 2000 integrated management in Hărtibaciu -Târnava Mare - Olt area." The authors gratefully acknowledge support for the processing of spatial data. Data processing was conducted as part of a larger research project at Leuphana University Lüneburg, which was externally funded by the Alexander von Humboldt Foundation via a Sofja Kovalevskaja Award to Professor Joern Fischer. The research stay of TH in Germany and the publication of this manuscript were supported by Alexander von Humboldt Foundation. The publication of the collected data was approved by the World Wild Fund (WWF) - the leader of this project with the condition to mention the funding source in the Acknowledgments. The funders had no role in study design, data collection, analysis and the preparation.

Competing Interests: The authors have declared that no competing interests exist.

* E-mail: hartel.tibor@gmail.com

Introduction

Traditional rural landscapes are receiving increasing attention due to their high biodiversity [1]. In Eastern Europe in particular, traditional rural landscapes with high nature value farmland are being managed for agricultural production while still supporting comparatively high levels of biodiversity, including many species now endangered in other parts of Europe [2], [3]. It was recently highlighted that Eastern Europe should play its role in global food security [4], [5], and this trend will most likely trigger an increase in production intensity in the farmlands of the region [4].

Man-made ponds are typical components of agricultural landscapes. Many of these ponds are created and maintained for a variety of purposes, such as drinking sources for domestic animals, water sources for agricultural irrigation, fish production

and places for recreational activities [6], [7]. Farmlands may be also rich in small temporary ponds, which are often created indirectly by various types of human and livestock activity. Despite their small size, a growing body of evidence suggests that permanent and temporary ponds significantly contribute to the biodiversity of entire landscapes [8]. Numerous protected or even endemic organisms are restricted to ponds within agricultural landscapes, including species of large branchiopods [9], amphibians [10], birds, plants and other organisms [11].

Due to their small size and dependency on human management, ponds and consequently the organisms inhabiting them are vulnerable to changes in land use practices. For example, ponds are threatened by land abandonment (i.e. through vegetation succession), land use intensification, the conversion of pastures into arable lands and the spread of urban areas [10], [12]. A rough estimation suggests that about half of

European ponds disappeared in the 1900–1990 period due to these changes [12]. Despite the high levels of, often unique, biodiversity and their increasingly threatened status, ponds are still widely neglected in many countries both by conservation research and policy [8].

Amphibians depend on ponds and are therefore good model organisms to explore the human impact on ponds and associated wildlife. Amphibians use a large variety of farmland ponds, with some species preferring permanent fishponds while others are restricted to temporary ponds [10], [13–15]. Pond breeding amphibians have complex life cycles, which span over egg, larvae and post-metamorphic stages, and depend on small sized stagnant water bodies for reproduction [10], [16]. Due to their permeable skin, they are very sensitive to microclimatic, physical and chemical changes in their aquatic and terrestrial environment [17]. Migration and dispersal are key features of amphibian movements, with important consequences for population dynamics [16]. However, since their dispersal is rather slow, amphibians are extremely sensitive to habitat loss and fragmentation [18]. Consequently, amphibians are declining on a global scale, with European decline being mainly due to a loss of breeding and terrestrial habitats [19].

In this paper, we explore the factors governing the distribution of four types of man-made ponds in a traditional rural landscape in Transylvania (Romania). We use a number of variables related to land use, landcover, human population size and natural environment. Secondly, we show the ecological importance of these ponds by presenting the percent of occurrence of two amphibian species in these ponds: the Common Toad (*Bufo bufo*) and the internationally endangered Yellow Bellied Toad (*Bombina variegata*). Finally, based on our results we aim to highlight current challenges related to the maintenance of the pond networks in traditional rural landscapes.

Materials and Methods

Ethics Statement

This research was conducted within a broad research project targeting the Natura 2000 areas from Southern Transylvania, Romania (see Acknowledgements) lead by the World Wild Fund (WWF) in collaboration with other major local and regional institutions, with the permission of the administrators of the site (Progresul Silvic). No specific permissions were required for particular locations and activities presented in this paper. One of the species (the Yellow Bellied Toad – *Bombina variegata*) is protected according to national Law and Natura 2000 regulations. The research did not involve any harmful intervention to wildlife or the pond systems surveyed.

Study Area

The study area is a hilly region of $ca\ 3163\ km^2$, located in Southern Transylvania, Romania, of which $ca\ 860\ km^2$ are under Natura 2000 regulations (Special Area of Conservation) (Fig. 1). The study area is dominated by traditional agricultural land use practices: the arable fields are still small and tilled mostly by horses and people similar to the management before mechanization of farming; artificial fertilizers and chemicals are rarely applied [3]. People use horses to extract wood from the forest and the infrastructural and urban development is overall low [3]. We refer to these agricultural practices in this paper from now on as being ‘traditional’. Currently $\sim 42\%$ of the study area is covered by broad-leaved forest, $\sim 22\%$ by meadows and pastures, $\sim 20\%$ by arable fields. Built areas represent $ca\ 3\%$ of the region and other land use classes (e.g. wetlands, orchards etc.) add up to 100%. The number of permanent ponds under 1 ha area has increased recently in parts of the study area [20].

Surveys

Pond surveys were carried out in 2011 (March–September) and 2012 (March–early July). The geographic coordinates and the altitude of each pond were measured with a handheld GPS

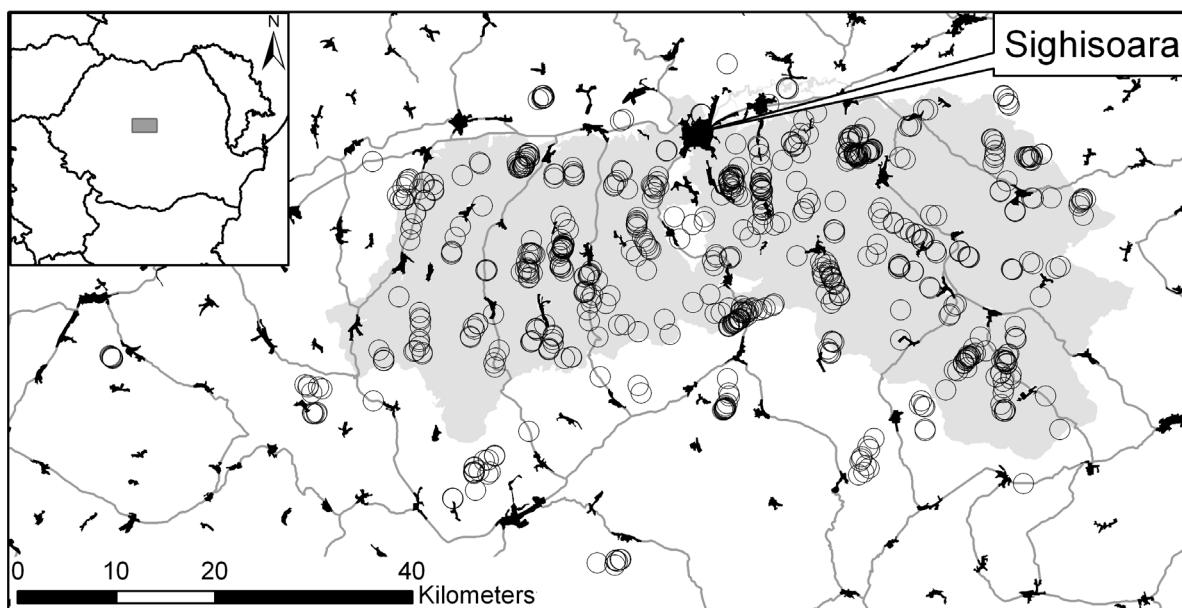


Figure 1. The location of the study region. Open circles represent the inventoried ponds and the grey shade represents the Special Area for Conservation.

doi:10.1371/journal.pone.0063649.g001

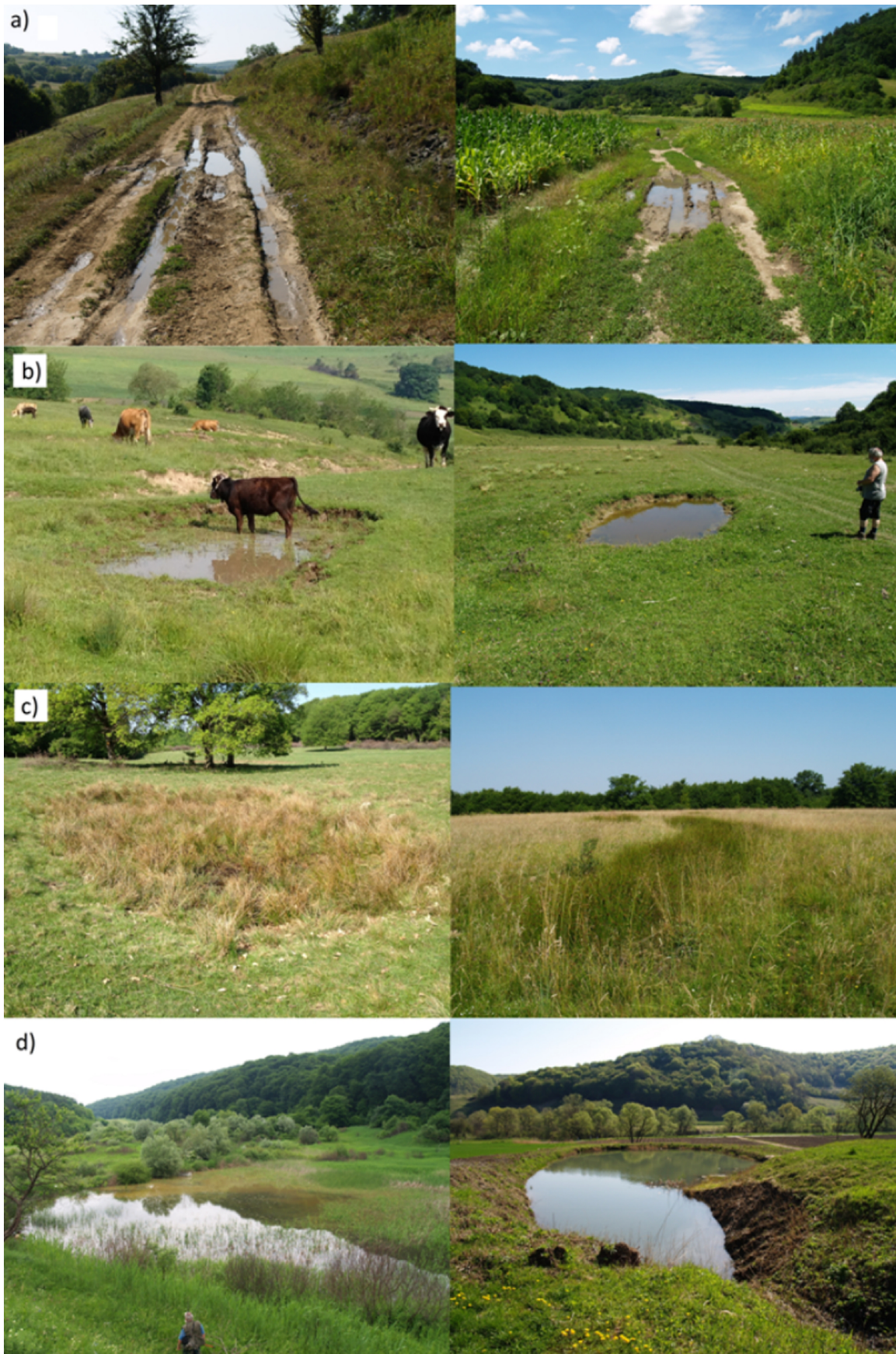


Figure 2. Sample pictures on the four pond type categories modelled in this paper: a) dirt road ponds, b) open cattle pond, c) overgrown ponds and d) fishponds. The first three categories are temporary ponds.
doi:10.1371/journal.pone.0063649.g002

device. Here we define as ‘ponds’ all small sized, permanent or temporary water bodies, which are non-flowing and are clearly distinguishable structures. We opportunistically but comprehensively sampled the whole surface area of the Natura 2000 site (see Fig. 1). Permanent ponds we located based on information from local people and satellite imagery (Google Earth). Some areas outside the Natura 2000 site were also surveyed (Fig. 1). In total 839 ponds were sampled. Each pond was classified into one of the following categories: (i) *dirt road ponds* (N=377, Fig. 2) were the smallest temporary water bodies (ca 2–30 m² surface area) created along unpaved roads mostly by horse carts and more rarely by heavy machinery such as tractors and machinery used for wood-extraction; dirt road ponds were the most abundant type of temporary ponds in this region. (ii) *Open cattle ponds* (N=170, Fig. 2) were small sized (ca 4–200 m²) temporary ponds which were created by buffalo and cattle grazing and have low (i.e. <30%) vegetation coverage. Open cattle ponds indicate that there are a current cattle or buffalo grazing or were only recently discontinued. (iii) *Temporary ponds overgrown by vegetation* (‘overgrown’, N=109, Fig. 2) were temporary ponds with similar size as the open cattle ponds (see above) but with more (i.e. > 60%) vegetation cover, especially with *Juncus* sp., *Carex* sp and *Lysimachia* sp. 95% of overgrown ponds were found within pastures where the grazing of cattle and buffalo had stopped or had severely decreased in its intensity. The hydroperiod of the temporary ponds is generally short. A five year study conducted in the centre of the study area [21] showed that the hydroperiod of temporary ponds ranged between 6 and 26 weeks. (iv) *Fishponds* (‘fish’, N=37, Fig. 2) were small sized (i.e. ca 0.2–5 ha) permanent ponds created for recreation and livestock watering. Temporary ponds such as ditches (N=51), livestock drinking troughs (N=33) and various other small non-flowing water bodies with other origins (‘other’, N=62) were also inventoried. These were excluded from our modelling because they are not the result of clear land management and landuse strategies.

Amphibian surveys were started in the middle of March in both 2011 and 2012. Both species were very visible due to their abundance in the ponds, activity of their larvae and post metamorphic stages and the small size of the ponds. Amphibians were searched visually (this proved to be highly efficient in

the small sized temporary ponds) and/or with dip netting. When finding at least one developmental stage in the water and/or close vicinity (i.e. up to ca two meter distance) we considered that the species was detected in the pond. Around 20% of the temporary ponds were surveyed two or more times in both years while the permanent ponds were surveyed once.

Data Analysis

The environmental variables used to model pond distribution are presented in the Table 1. We used the maximum entropy algorithm “Maxent” to predict the distribution of different pond types within the study area. We used this modelling approach because its predictive power is comparable or even outperforms other available presence-only modelling algorithms [22–24]. Maxent randomly spreads background points to approximate the best fitting probability distribution in order to estimating habitat suitability [24]. These background points are then used for model evaluation using area under curve (AUC) statistics [22]; we used 100 runs and split the data 80%/20% for training and test datasets, respectively.

We activated the “fade by clamping” option in Maxent to mitigate clamping issues to correct for extrapolation effects and spatially variable prediction results due to uneven data sampling [25], [26]. In order to spatially check for uneven prediction results we inspected the variability of the averaged model results; since overall prediction variability on average was low for all ponds we refrained from giving more details on this. In addition, we compared initial models based on random background points within the niche space of the presence points with background points matching the distribution of the presence points [26]. Since differences between both approaches were generally negligible across pond types (AUC difference <0.02), we used standard background points generated by 100 Maxent runs (10000 points) based on the niche space covered by the presence points. Results in the maps are predictions based on the area which is shown, thus partly projecting beyond the sampled area in order to show results for the whole region (see sample points in Fig. 1).

Table 1. The environmental variables used to model pond distribution.

Variable name	Description	Source
CORINE Land Cover classes (CLC)	44 landcover classes, out of which 20 were occurring within our study area	European Environmental Agency (2011): (http://www.eea.europa.eu/publications/COR0-landcover).
Land cover heterogeneity	Landscape heterogeneity on a 1 ha scale	Calculated as the standard deviation within 1 ha circle using a nearest neighbor filter of the monochromatic channel of SPOT 5 data (©CNES 2007, Distribution Spot Image SA). Highest values for this variable occurred at the edge of two landuse types e.g. forest edge and pasture, or woody elements in an open area.
Slope	Slope in degrees	Calculated from Aster DEM data, downloaded from NASA's Reverb (http://reverb.echo.nasa.gov/).
Road distance	Distance to the nearest road	Based on open source road layers (http://planet.openstreetmap.org).
Village distance	Distance to the nearest village	Based on open source village layers (http://planet.openstreetmap.org).
Human population density	Krigged based on commune polygons, where commune population was used as a data basis	Based on population census data derived from national official databases.

doi:10.1371/journal.pone.0063649.t001

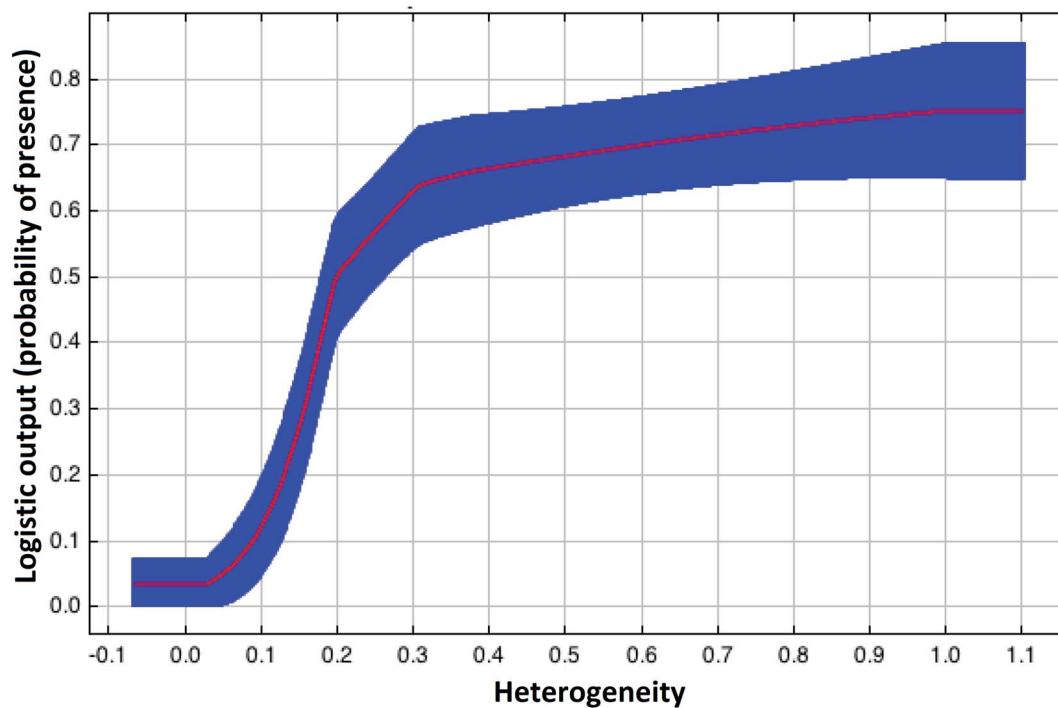


Figure 3. Distribution models for the four pond types addressed in this research. a) fishponds, b) open cattle ponds, c) dirt road ponds, d) overgrown ponds. Darker colours suggest higher probability of occurrence.
doi:10.1371/journal.pone.0063649.g003

Results

Modelling Pond Distribution

Ponds were located at an average altitude of 526 m above sea level (minimum: 320 m; maximum: 774 m). The distribution

model of 'overgrown' ponds had the highest accuracy (AUC = 0.82), while 'fishponds' and 'open cattle' pond showed intermediate values (AUC = 0.79 and 0.80). Distribution models for 'dirt road ponds' had the lowest AUC value (0.73) (see Table 2).

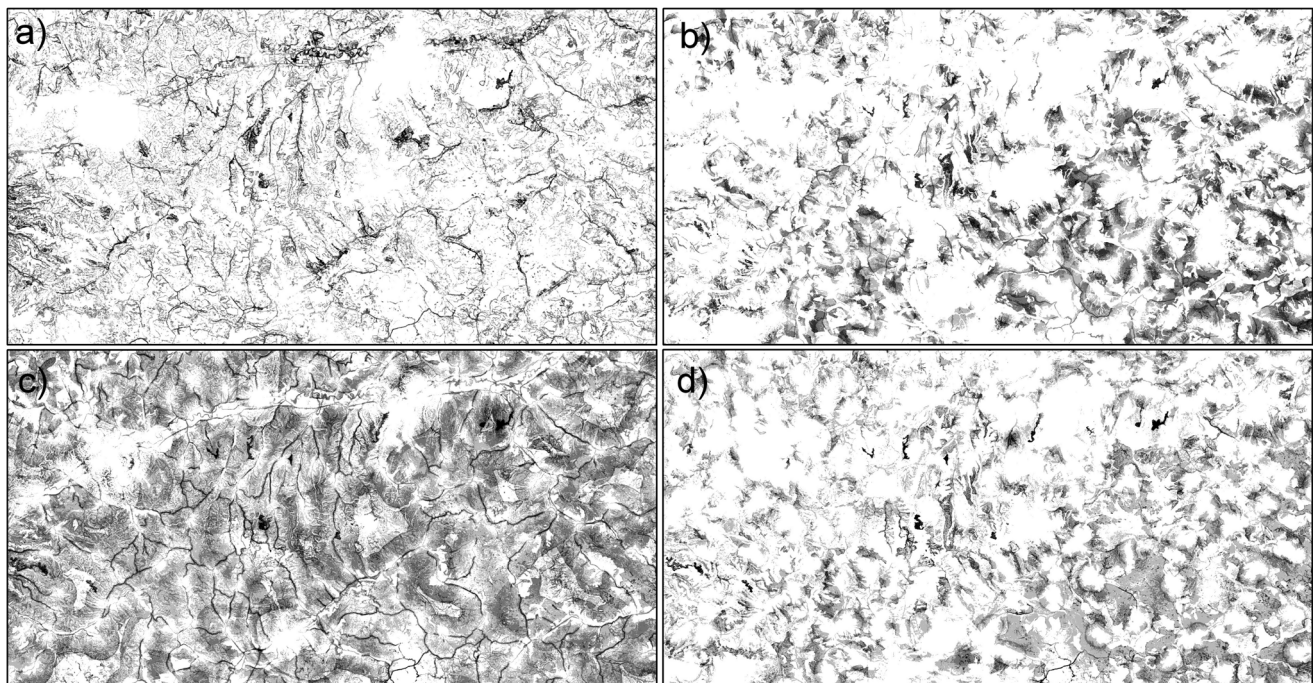


Figure 4. Response curve for the variable 'heterogeneity'. The blue area corresponds to the standard deviation of 1.
doi:10.1371/journal.pone.0063649.g004

Table 2. Percent contribution of different variables to the distribution model of four common pond types in Central Romania.

Pond type	CLC	Land cover heterogeneity	Slope	Road distance	Village distance	Human population density	Average AUC (SD)
'Fish'	25	49.2	9.3	5.4	6.3	4.8	0.790 (0.10)
'Dirt road pond'	31.5	14.2	7.2	21.7	12.8	12.6	0.737 (0.02)
'Open cattle'	41.4	7.7	4.2	8.6	20.9	17.3	0.805 (0.03)
'Overgrown'	51.9	9.1	6.1	6.5	17.6	8.9	0.826 (0.06)

doi:10.1371/journal.pone.0063649.t002

Predictor contribution differed widely between different pond types (Table 2). Land use heterogeneity was the most important predictor for the permanent fishponds. The relationship between the variable heterogeneity and the probability of presence for fishponds is shown in Fig. 3. The Corine land cover variables were the most important predictor for the temporary ponds (Table 2). The landcover class 'Land principally occupied by agriculture with significant areas of natural vegetation' (CLC 243) was an important predictor for all pond types (Table 3). The 'Transitional woodland and scrub' (CLC 324), the landcover 'Pasture' (CLC 231) and 'Natural grassland' (CLC 321) were important predictors for the 'fish ponds' (Table 3). The landcover 'Transitional woodland and scrub' was important predictor for the 'open cattle' ponds (Table 3). The probability of finding 'Dirt road ponds' is relatively uniform across the region (excepting the human settlements) while the likelihood of finding other pond types is higher in certain areas of the region (Fig. 4).

Pond Use by Amphibians

Bombina variegata was found in 603 ponds while *Bufo bufo* was found in 57, including all the 'fishponds'. The occurrence of *B. variegata* was lowest in the 'overgrown' and 'fishponds' while *B. bufo* had low occurrence in the temporary ponds (Fig. 5).

Discussion

Our analysis showed that landcover heterogeneity was the most important predictor for fishpond distribution. There are two potential explanations for this: (i) this may be an artefact of the permanent ponds themselves, which may contribute to the increased heterogeneity at local scale. We believe that this influence was overall small because the variable heterogeneity was influenced by the interface of more contrasting landuses (Table 1). (ii) An alternative explanation is that people deliberately select more heterogeneous landscapes for permanent pond

creation. The number of small fishponds is sharply increasing in this region and interviews with fishpond owners suggest that they are important not only as a source of food and income, but also for recreation activities (TH, unpublished data).

Agricultural landcover representing farmed areas was an important driver for the distribution of all pond types modelled (Table 3). The forested areas were not important for the dirt road ponds although forest cover is high in the region (~30% of land area—see the study area description) and many dirt road ponds were located in the forest. The most likely explanation is the relatively low heterogeneity of the forests, while agricultural landscapes show a more complex structure. People access their basic resources such hay, timber and crops mostly by horse carts and small tractors (these being overall very few in the villages) on dirt roads. This disturbance is the main cause of dirt road ponds. We found that land cover with transitional woodland and scrub were important predictors for the 'open cattle ponds'. In our region these landscape elements are wood-pastures, which were traditionally grazed by cattle, buffalo and horses [27 and see Fig. 2]. Cattle prefer moist and more productive parts of the pasture [28], and moderate grazing with cattle contributes to the creation and maintenance of temporary wetlands and is often used in management strategies for wetland restoration (e.g. [29–31]); amphibians may benefit from this (e.g. [32], [33]).

We showed that even snapshot surveys can reveal high prevalence of two amphibian species in man-made ponds. The importance of man-made ponds for amphibians was reported from other regions of Europe, for example England [13], Sweden [34], Belgium [35], France [10], [14], Italy [36], Switzerland [37], Germany [38] and Romania [39]. *Bombina variegata* was frequently present in the surveyed temporary ponds in our study (Fig. 2). The high occurrence of *B. variegata* in traditionally managed rural landscapes might be explained both by its behaviour and the still high suitability of the whole region for temporary ponds as breeding habitats for this toad (e.g. Fig. 4b, c). *Bombina variegata*

Table 3. The importance of different landcover categories (as named in the Corine landcover database) for the distribution of the four pond types.

Pond type	Land principally occupied by agriculture with significant areas of natural vegetation	Pastures	Natural grasslands	Transitional woodland and scrub ¹
'Dirt road pond'	*			
'Open cattle'	*			*
'Fish pond'	*	*	*	*
'Overgrown'	*			

* = important landcover classes with a presence probability > 0.7.

¹ = defined as wood-pastures in our study region.

The importance was assessed based on probability of occurrence of the given habitat classes in the Maxent results.

doi:10.1371/journal.pone.0063649.t003

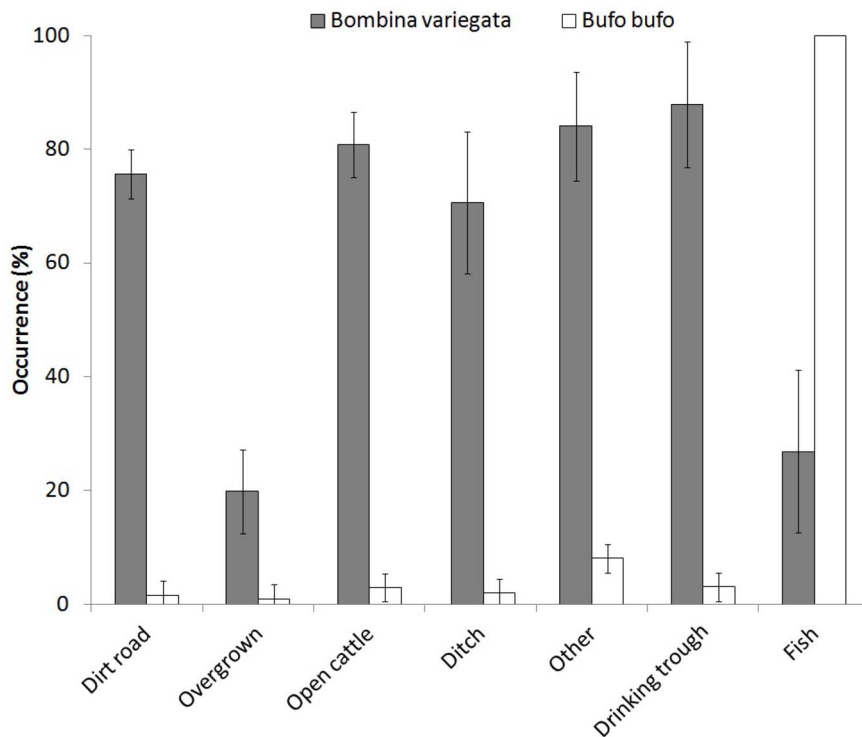


Figure 5. The occurrence (%) of *Bombina variegata* and *Bufo bufo* in different pond types based on the recorded presences. Errors are 95% confidence intervals. The only permanent ponds were the fishponds.
doi:10.1371/journal.pone.0063649.g005

prefers temporary ponds and breeds multiple times during one season, usually in strong synchronization with rainfall, which fills the ponds [40–42]. This is possible because female *B. variegata* have continuous egg development [43]. *Bombina variegata* is capable of long-distance movements especially in the rainy periods of the year [44], [45]. This allows the colonization of newly formed (i.e. less than one year old) temporary ponds [45]. The eggs and larval periods are short [46] which is an advantage in exploiting ponds that only persist for a short duration.

Bufo bufo was found in all the fishponds surveyed while it occurs rarely in the temporary ponds. *Bufo bufo* prefers permanent ponds, which are typically surrounded by heterogeneous land cover in close proximity to forest [47]; the species is not sensitive to fish predation due to the unpalatable larvae [20], [48]. The reproductive success of *Bufo bufo* was however rather low in temporary ponds [21]. This species has good colonization ability [49] and the creation of additional fishponds may be beneficial for this species in the long run.

Traditionally managed farmlands are vulnerable to major changes in land use (e.g. intensification or abandonment, change in grazing livestock), infrastructural development and urbanization [50], [51]. Small temporary ponds, which depend on extensive landuse, may be among the first habitats that disappear if landuse is changed, intensified or the land is abandoned. Our study

showed that a large number of small sized amphibian ponds (e.g. cattle ponds, dirt road ponds) are formed and maintained by traditional landuse practices and activities. Amphibian occurrence was high in these ponds. The currently applied land use practices in the rural communities of Southern Transylvania do not represent a free proactive choice for most of people; rather they are the result of poverty and lack of other options [3]. Local communities in this region have a strong desire to develop [52], making the conservation of small ponds and their associated biodiversity a challenging endeavour in this traditional rural region.

Acknowledgments

The manuscript benefitted from the comments of Laura Sutcliffe, Joern Fischer and Dave Abson. Gabi Goja and Kuno Martini assisted with most of the fieldwork. We would like to thank Dr. Benedikt Schmidt and two anonymous reviewers for the very constructive comments on the manuscript.

Author Contributions

Conceived and designed the experiments: TH. Performed the experiments: TH. Analyzed the data: HvW TH. Contributed reagents/materials/analysis tools: TH HvW. Wrote the paper: TH HvW.

References

- Wright HL, Lake IR, Dolman PM (2008) Agriculture – a key element for conservation in the developing world. *Cons Lett* 5: 11–19.
- Paracchini ML, Petersen J-E, Hoogeveen Y, Bamps C, Burfield I, et al. (2008) High Nature Value Farmland in Europe: an estimate of the distribution patterns on the basis of land cover and biodiversity data. JRC Scientific and Technical Reports. Available: http://agrienv.jrc.it/publications/pdfs/HNV_Final_Report.pdf.
- Fischer J, Hartel T, Kuemmerle T (2012) Conservation policy in traditional farming landscapes. *Cons Lett* 3: 167–175.
- Benton T, Hartel T, Settle J (2011) Food security: the role of Europe. *Nature* 480: 39.
- Foley JA, Ramankutty N, Brauman KA, Cassidy ES, Gerber JS, et al. (2011) Solutions for a cultivated planet. *Nature* 478: 337–342.

6. Boothby J, Hull AP (1997) A census of ponds in Cheshire, North West England. *Aquat Conserv* 7: 75–79.
7. Jeffries MJ (2011) Ponds and the importance of their history: an audit of pond numbers, turnover and the relationship between the origins of ponds and their contemporary plant communities in south east Northumberland, UK. *Hydrobiologia* 689: 11–12.
8. Boix D, Biggs J, Cereghino R, Hull AP, Kalettka T, et al. (2012) Pond research and management in Europe: “Small is Beautiful”. *Hydrobiologia* 689: 1–9.
9. Demeter L, Hartel T (2007) A rapid survey of large branchiopods in Romania. *Ann Limnol – Int J Limn* 43: 101–105.
10. Curado N, Hartel T, Arntzen JW (2011) Amphibian pond loss as a function of landscape change: A case study over three decades in an agricultural area of Northern France. *Biol Conserv* 144: 1610–1618.
11. Scheffer M, Geest GJ, van Zimmer K, Jeppesen E, Sondergaard M, et al. (2006) Small habitat size and isolation can promote species richness: second-order effects on biodiversity in shallow lakes and ponds. *Oikos* 112: 227–231.
12. Hull AP (1997) The pond life project: a model for conservation and sustainability. In: Curry, N., Owen, S. (Eds.), *Changing Rural Policy in Britain. Countryside and Community Press*, Cheltenham, 127–144.
13. Beebee TJC (1997) Changes in dewpond numbers and amphibian diversity over 20 years on chalk downland in Sussex, England. *Biol Conserv* 81: 215–219.
14. Crochet P-A, Chaline O, Cheilan M, Guillaume CP (2004) No evidence of general decline in an amphibian community of Southern France. *Biol Conserv* 119: 297–304.
15. Hartel T, Schweiger O, Öllerer K, Cogălniceanu D, Arntzen JW (2010) Amphibian distribution in a traditionally managed rural landscape of Eastern Europe: probing the effect of landscape composition. *Biol Conserv* 143: 1118–1124.
16. Semlitsch RD (2008) Differentiating migration and dispersal processes for pond breeding amphibians. *J Wildlife Manage* 72: 260–267.
17. Feder ME, Burggren WW (Eds) (1992) *Environmental physiology of amphibians*. Chicago, University of Chicago Press.
18. Cushman SA (2006) Effects of habitat loss and fragmentation on amphibians: A review and prospectus. *Biol Conserv* 128: 231–240.
19. Stuart SN, Chanson JS, Cox NA, Young BE, Rodrigues ASL, et al. (2004) Status and trends of amphibian declines worldwide. *Science* 306: 1783–1786.
20. Hartel T, Nemes Sz, Cogălniceanu D, Öllerer K, Schweiger O, et al. (2007) The effect of fish and habitat complexity on amphibians. *Hydrobiologia* 583: 173–182.
21. Hartel T, Băncilă R, Cogălniceanu D (2011) Spatial and temporal distribution of amphibians in a hidrologically modified landscape. *Freshwater Biol* 56: 2288–2298.
22. Phillips SJ, Anderson RP, Schapire RE (2006) Maximum entropy Modelling of species geographic distributions. *Ecol Model* 190: 231–259.
23. Phillips SJ, Dudik M (2008) Modelling of species distributions with Maxent: new extensions and a comprehensive evaluation. *Ecography* 31: 161–175.
24. Elith J, Phillips SJ, Hastie T, Dudik M, Eñ Chee Y, et al. (2011) A statistical explanation of MaxEnt for ecologists. *Diversity and Distributions* 17: 43–57.
25. Gibson L, Barrett B, Burbidge A (2007) Dealing with uncertain absences in habitat Modelling: a case study of a rare ground-dwelling parrot. *Diversity and Distributions* 13: 704–713.
26. Phillips SJ, Dudik M, Elith J, Graham CH, Lehmann A, et al. (2009) Sample selection bias and presence-only distribution models: implications for background and pseudo-absence data. *Ecol Appl* 19: 181–197.
27. Dörner B (1910) Az erdélyi szászok mezőgazdasága. Győr. (in Hungarian).
28. Putz-Anderson D, Dengler J, Lehmann S, Hardtle W (2008) Site use of grazing cattle and sheep in a large scale pasture landscape: a GPS/GIS assessment. *Applied Animal Behaviour Science* 111: 54–67.
29. Briggs J, Corfield A, Walker D, Whitfield M, Williams P (1994) New approach to the management of ponds. *British Wildlife* 5: 273–287.
30. Barbaro L, Dutoit T, Cozic P (2001) A six year experimental restoration of biodiversity by shrub-clearing and grazing in calcareous grasslands of the French Alps. *Biodivers Conserv* 10: 119–135.
31. Grootjans AP, Geelen HWT, Jansen AJM, Lammerts EJ (2002) Restoration of coastal dune slacks in the Netherlands. *Hydrobiologia* 478: 181–203.
32. Briggs L (2001) Creation of temporary ponds for amphibians in northern and central Europe. In Rouen, K. (ed.), *European Temporary Ponds: A Threatened Habitat*. Freshwater Forum 17: 63–70.
33. Pyke CR, Marty J (2005) Cattle grazing mediates climate change impacts on ephemeral wetlands. *Conserv Biol* 19: 1619–1625.
34. Löfvenhaft K, Runborg S, Sjögren-Gulve P (2004) Biotope patterns and amphibian distribution as assessment tools in urban landscape planning. *Landscape Urban Plan* 68: 403–427.
35. Denoël M, Ficetola GF (2007) Landscape level thresholds and newt conservation. *Ecol Appl* 17: 302–309.
36. Ficetola GF, De Bernardi F (2004) Amphibian in a human dominated landscape: the community structure is related to habitat features and isolation. *Biol Conserv* 119: 219–230.
37. Zanini F, Pellet J, Schmidt BR (2009) The transferability of distribution models across regions: an amphibian case study. *Diversity and Distributions* 15: 469–480.
38. Sinsch U, Seidel D (1995) Dynamics of local and temporal breeding assemblages in a *Bufo calamita* metapopulation. *Austr J Ecol* 20: 351–361.
39. Plăiașu R, Băncilă R, Samoilă C, Hartel T, Cogălniceanu D (2012) Aquatic habitat availability and use by amphibian communities in a rural landscape. *Herpetol J* 22: 13–21.
40. Barandun J, Reyer H-U (1998) Reproductive ecology of *Bombina variegata*: habitat use. *Copeia* 1998: 497–500.
41. Barandun J, Reyer H-U (1997) Reproductive ecology of *Bombina variegata*: characterisation of spawning ponds. *Amphibia-Reptilia* 18: 143–154.
42. Hartel T, Nemes Sz, Mara Gy (2007) Breeding phenology and spatio-temporal dynamics of pond use by the yellow-bellied toad (*Bombina variegata*) population: the importance of pond availability and duration. *Acta Zoologica Lithuanica* 17: 56–63.
43. Böll S (2002) Ephemere Laichgewässer: Anpassungsstrategien und physiologische Zwänge der Gelbbauchunke (*Bombina variegata*) in einem Lebensraum mit unvorhersehbarem Austrocknungsrisiko. PhD Thesis. Würzburg: Julius-Maximilians-Universität.
44. Gollmann G, Gollmann B, Baumgartner C (1998) Oviposition of yellow bellied toads *Bombina variegata* in contrasting water bodies. In: C. Miaud, and R. Guyétant (eds) *Current Studies in Herpetology. Le Burget du Lac, SHE*, 139–145.
45. Hartel T (2008) Movement activity in a *Bombina variegata* population from a deciduous forested landscape. *North-West J Zool* 4: 79–90.
46. Jahn K, Knitter H, Rahmel U (1996) Erste Ergebnisse einer Studie an der Gelbbauchunke (*Bombina variegata*) in einem natürlichen Habitat im französischen Zentralmassiv. *Naturschutzreport* 11: 32.46.
47. Hartel T, Nemes Sz, Demeter L, Öllerer K (2008) Pond and landscape characteristics: which are more important for the common toad (*Bufo bufo*)? A study case from central Romania. *Appl Herpetol* 5: 1–12.
48. Manteifel YB, Reshetnikov AN (2002) Avoidance of noxious tadpole prey by fish and invertebrate predators: adaptivity of a chemical defence may depend on predator feeding habits. *Archiv für Hydrobiologie* 153: 657–668.
49. Halley JM, Oldham RS, Arntzen JW (1996) Predicting the persistence of amphibian populations with the help of a spatial model. *J Appl Ecol* 33: 455–470.
50. Donald PF, Green RE, Heath MF (2001) Agricultural intensification and the collapse of Europe's farmland bird populations. *P Roy Soc Lond B Bio* 268: 25–29.
51. Stoate C, Baldi A, Beja P, Boatman ND, Herzon I, et al. (2009) Ecological impacts of early 21st century agricultural change in Europe - a review. *J Env Manage* 91: 22–46.
52. Mikulcak F, Newig J, Milcu AI, Hartel T, Fischer J (2012) Integrating rural development and biodiversity conservation: A local level perspective from Southern Transylvania (Romania). *Environ Conserv in press*. DOI: <http://dx.doi.org/10.1017/S0376892912000392>.